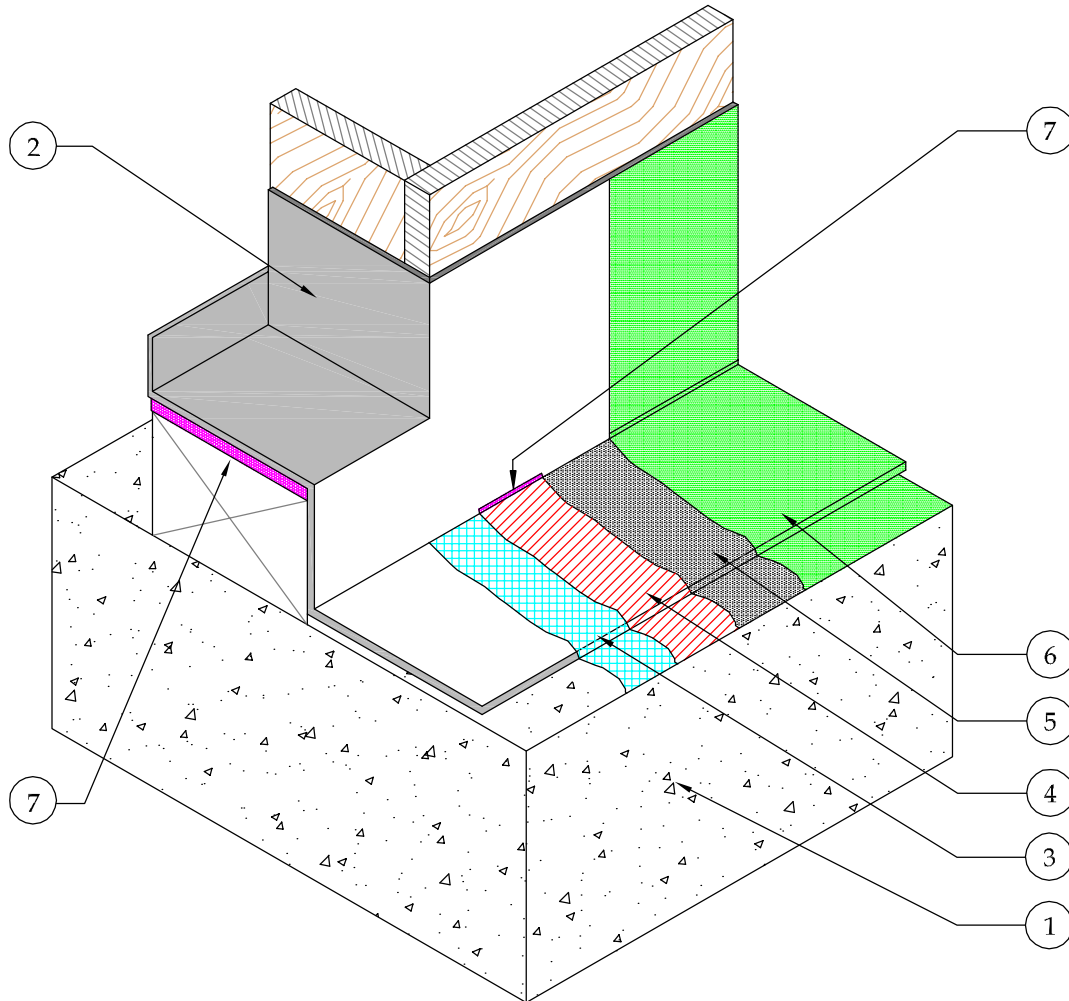


1. CONCRETE
SLOPED 1/8" PER FOOT
2. MIN. 26 GAUGE GALVANIZED,
THRESHOLD FLASHING (BONDERIZED)
3. GU80 PRIMER
4. 3/4 OZ FIBERGLASS & PD RESIN (2 COATS)
5. GU80 TOP COAT
6. GS88 PIGMENTED SEALER
7. ASTM C-920 POLYURETHANE SEALANT



DETAIL-DOOR PAN FLASHING-ONE PIECE OVER CONCRETE
SUBSTRATE- ISOMETRIC

SCALE: N.T.S



41610 Date St., Suite 104 * Murrieta, CA. 92562
Phone: 800.364.0287 * Fax: 951.834.9555
WWW.PLIDEK.COM

These waterproofing procedures are not to be used for permit and should be reviewed by the project architect. The waterproofing procedures are not complete plans or specifications and a professional design professional should be contacted prior to performing major waterproofing and repairs.

System:		Con-Dek System by Pli-Dek Systems, Inc. ICC-ES ESR-2097	
Detail:		DOOR PAN FLASHING ONE PIECE OVER CONCRETE SUBSTRATE-ISOMETRIC	
Job:		Drawing Number:	
Date:	05-3-2013	CD-3	
Dwn:	H.K		