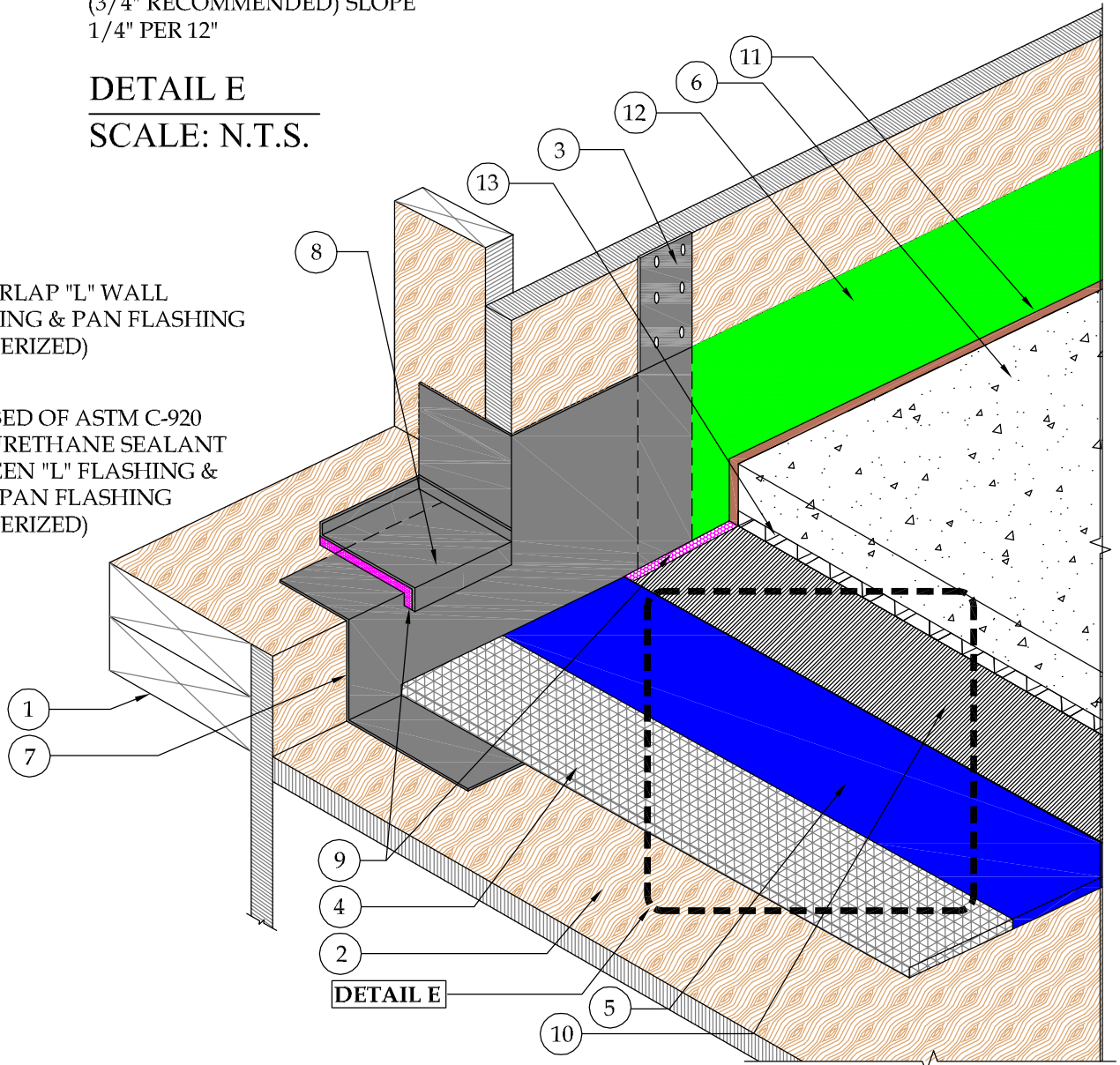


1. WOOD STUD FRAMING
2. PLYWOOD DECK (SLOPED)
3. WIND LOAD STRAPPING (AS REQUIRED)
4. 2.5 GALVANIZED METAL LATH
5. GU80 BASE COAT
6. SURFACING (BY OTHERS)
7. MIN. 2" x 6", 26 GAUGE GALVANIZED "L" METAL (BONDERIZED)
8. GALVANIZED THRESHOLD PAN FLASHING
9. ASTM C-920 POLYURETHANE SEALANT
10. 3/4 OZ. FIBERGLASS & PD RESIN WITH GU80 TOP COAT
11. EXPANSION MATERIAL (BY OTHERS)
12. GS88 PIGMENTED SEALER
13. DRAIN BOARD

DETAIL E
SCALE: N.T.S.

NOTE:
4" OVERLAP "L" WALL FLASHING & PAN FLASHING (BONDERIZED)

NOTE:
FULL BED OF ASTM C-920 POLYURETHANE SEALANT BETWEEN "L" FLASHING & DOOR PAN FLASHING (BONDERIZED)



DETAIL-PLI-DEK "U" SYSTEM - PAVER OR CONCRETE OVERLAY
SCALE: N.T.S.



41610 Date St., Suite 104 * Murrieta, CA. 92562
Phone: 800.364.0287 * Fax: 951.834.9555
WWW.PLIIDEK.COM

These waterproofing procedures are not to be used for permit and should be reviewed by the project architect. The waterproofing procedures are not complete plans or specifications and a professional design professional should be contacted prior to performing major waterproofing and repairs.

System:		Pli-Dek "U" System ICC-ES ESR-2097	
Detail:		PAVER OR CONCRETE OVERLAY	
Job:		Drawing Number:	
Date:	05-3-2013	PD-16	
Dwn:	H.K		