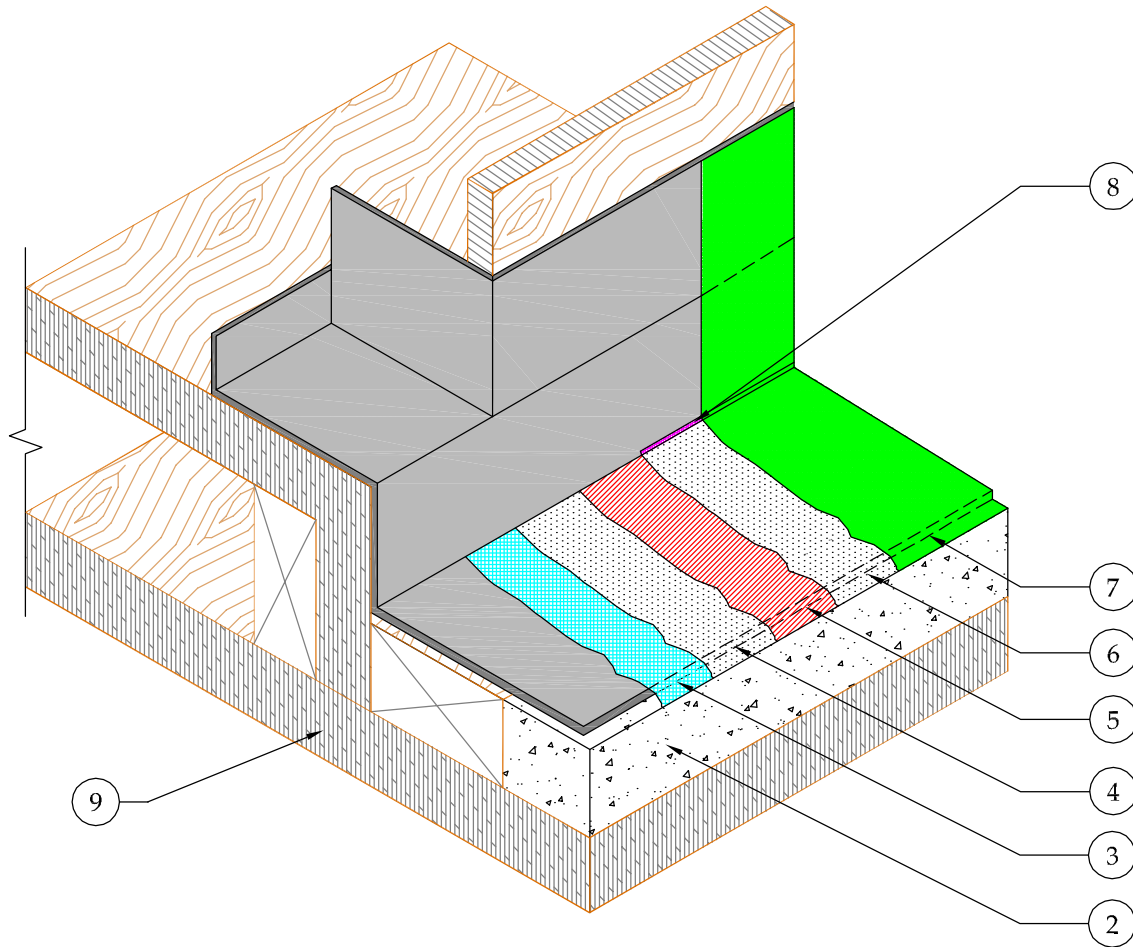


1. MIN. 26 GAUGE GALVANIZED, THRESHOLD FLASHING (BONDERIZED) (ONE PIECE SILL PAN)
2. 3/4"-1" DEK-C-MENT BY MAX EXTERIOR
3. GU80 PRIMER
4. GU80 CUSTOM TOP COAT (SCREED COAT)
5. 3/4 OZ FIBERGLASS & PD RESIN (2 COATS)
6. GU80 TOP COAT (FINISH COAT)
7. GS88 PIGMENTED SEALER
8. ASTM C-920 POLYURETHANE SEALANT
9. PLYWOOD SUBSTRATE (3/4" RECOMMENDED)



DETAIL-DEK-C-MENT BY MAX EXTERIOR-DOOR PAN FLASHING-
ISOMETRIC

SCALE: N.T.S



41610 Date St., Suite 104 * Murrieta, CA. 92562
Phone: 800.364.0287 * Fax: 951.834.9555
WWW.PLIIDEK.COM

These waterproofing procedures are not to be used for permit and should be reviewed by the project architect. The waterproofing procedures are not complete plans or specifications and a professional design professional should be contacted prior to performing major waterproofing and repairs.

System: Con-Dek by Pli-Dek Systems, Inc.
ICC-ES ESR-2097
Detail: Dek-C-Ment by Max Exterior-Door Pan
Flashing-Isometric

Job:
Date: 10-10-2013
Dwn: H.K

Drawing Number:
MAX-2