

Description

Pli-Dek Balcony Deck Drains are specifically designed for use with the Pli-Dek and Con-Dek waterproofing systems for drainage of horizontal decks, terraces and balconies. The Pli-Dek Balcony Deck Drains have a galvanized metal flange, brass throats and chrome strainers. The Pli-Dek Balcony Deck Drains are provided in a 2" or 3" diameter drain configuration. The Pli-Dek Balcony Deck Drains are also available in Copper or Stainless Steel.

Use

The Pli-Dek Balcony Deck Drains are specifically designed for drainage of horizontal decks, terraces and balconies. The drains are installed to convey rain water or cleaning solutions from the deck area of the building structure with positive slope to drain at a minimum of 1/8" or per local Building Code.

Advantages

- Ease of installation
- Cost effective
- Meets ASME A112.6.5

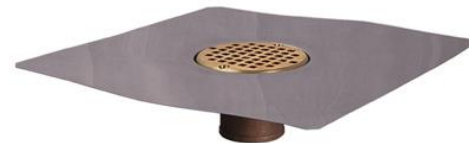
Specification

Balcony Deck Drain

- 2" drain – 9" X 9" flange
- 3" drain - 10" X 10" flange

Threaded Tile Deck Drain

- 2" – 12" X 12" flange
 - Adjustable Height – 1" to 3"
- 3" – 12" X 12" flange
 - Adjustable Height – 1" to 3"



Disclaimer:

This information is furnished without warranty, representation, inducement or license of any kind, except sources believed by Pli-Dek Systems, Inc. to be accurate. Pli-Dek Systems, Inc. does not assume any legal responsibility for use or reliance on the information supplied here.

