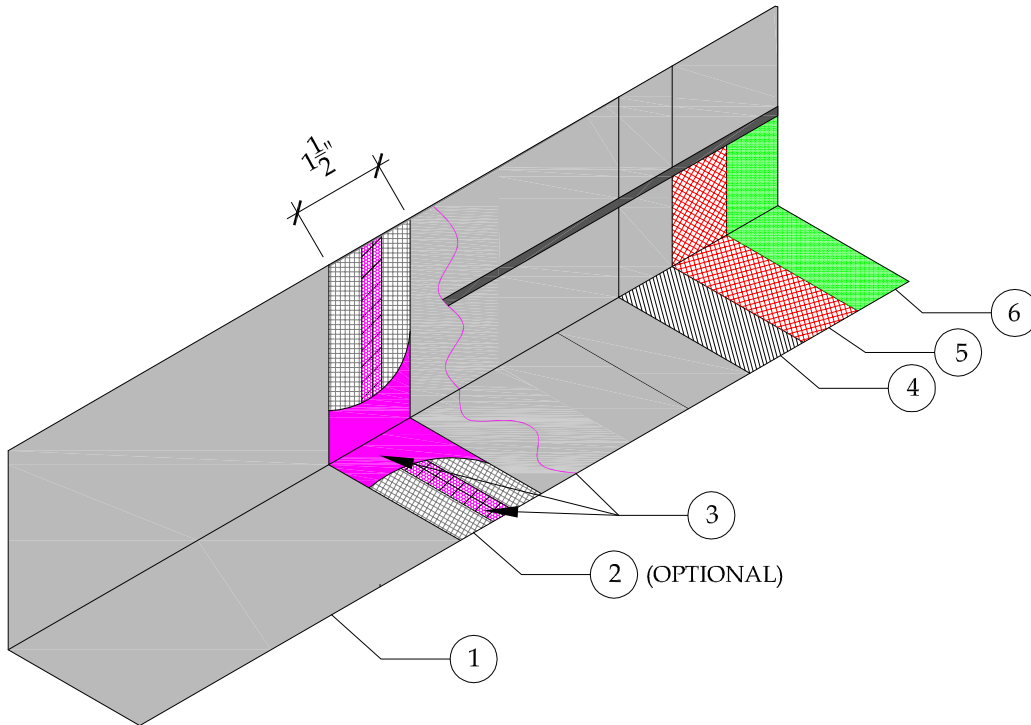


NOTES:

- ALL METAL FLASHING SURFACES REQUIRE CLEAN WIPE WITH SOLVENT PRIOR TO INSTALLATION, (MEK, ACETONE, XYLOL, XYLENE, ISOPROPYL ALCOHOL OR VINEGAR).
- ALL FLASHING OVERLAPS SHALL BE A MIN. OF 4". INSTALLED NOT TO "BUCK" WATER.
- THE FACE SEAM OF THE SHEET METAL OVERLAP, HORIZONTAL AND VERTICAL AJOINMENT, SHALL HAVE AN EMBEDMENT OF 3/4" SEALANT BEAD. (SURFACE SEALANT NOT ACCEPTABLE).
- (OPTIONAL) APPLY CONTINUOUS SEALANT 1" IN BOTH DIRECTIONS FROM THE OVERLAP SEAM AND EMBED 1-1/2" PAPERLESS DRYWALL JOINT TAPE WITH A MARGIN TROWEL TO THE ENTIRE SEAM AND ENSURE THE PAPERLESS DRYWALL JOINT TAPE IS COMPLETELY IN THE SEALANT.
- SEALANT IS REQUIRED TO BE A POLYURETHANE SEALANT ER ASTM C 920, IE: SIKA-1A, TREMCO 116 OR 911, SONNEBORN-NP1, DAP PREMIUM POLYURETHANE, QUICKRETE 8660, OR APPROVED EQUAL.
- ALL VERTICAL FLASHING AND DOOR PANS SHALL BE COATED WITH PD RESIN, GU80 TOPCOAT AND GS88 PIGMENTED SEALER AT THE TIME OF APPLYING EACH PRODUCT.

DETAIL LEGEND

1. MIN. 26 GA. GALVANIZED, THRESHOLD FLASHING (BONDERIZED)
2. PAPERLESS DRYWALL JOINT TAPE
3. ASTM C-920 POLYURETHANE SEALANT
4. 3/4 OZ. FIBERGLASS & PD RESIN
5. GU80 TOP COAT
6. GS88 PIGMENTED SEALER



DETAIL-FLASHING OVERLAP

SCALE: N.T.S



41610 Date St., Suite 104 * Murrieta, CA. 92562
 Phone: 800.364.0287 * Fax: 951.834.9555
 WWW.PLIDEK.COM

These waterproofing procedures are not to be used for permit and should be reviewed by the project architect. The waterproofing procedures are not complete plans or specifications and a professional design professional should be contacted prior to performing major waterproofing and repairs.

System: Con-Dek BYPLi-Dek Systems, Inc.
 ICC-ES ESR-2097

Detail: FLASHING OVERLAP

Job:
 Date: 12-12-2013
 Dwn: H.K

Drawing Number:
CD-15