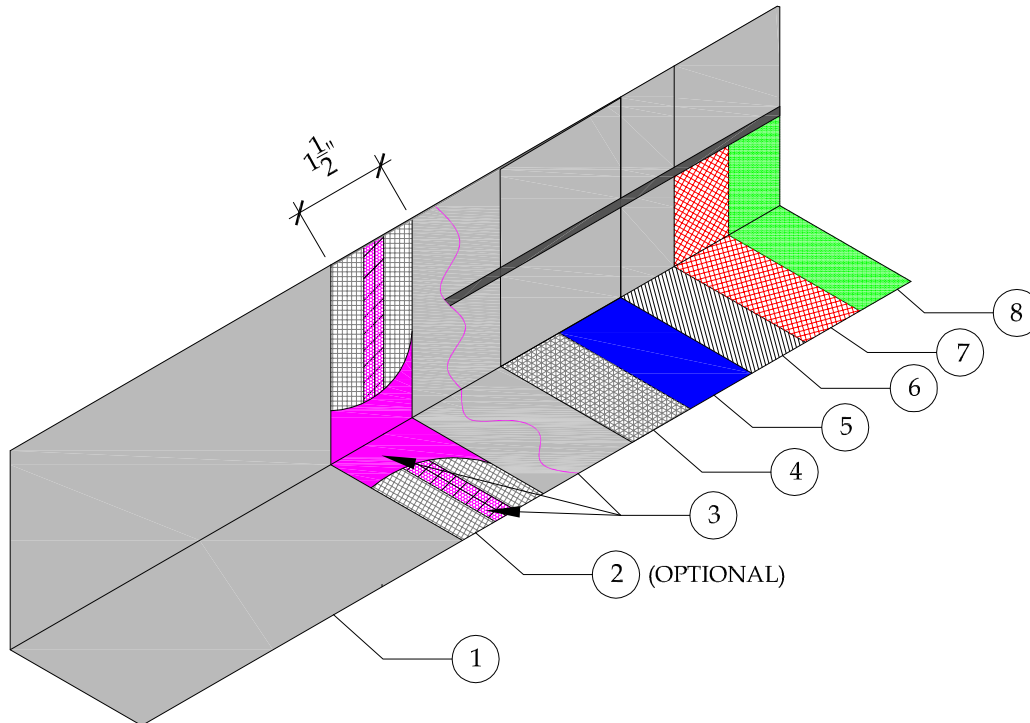


NOTES:

- ALL METAL FLASHING SURFACES REQUIRE CLEAN WIPE WITH SOLVENT PRIOR TO INSTALLATION, (MEK, ACETONE, XYLOL, XYLENE, ISOPROPYL ALCOHOL OR VINEGAR).
- ALL FLASHING OVERLAPS SHALL BE A MIN. OF 4". INSTALLED NOT TO "BUCK" WATER.
- THE FACE SEAM OF THE SHEET METAL OVERLAP, HORIZONTAL AND VERTICAL AJOINMENT, SHALL HAVE AN EMBEDMENT OF 3/4" SEALANT BEAD. (SURFACE SEALANT NOT ACCEPTABLE).
- (OPTIONAL) APPLY CONTINUOUS SEALANT 1" IN BOTH DIRECTIONS FROM THE OVERLAP SEAM AND EMBED 1-1/2" PAPERLESS DRYWALL JOINT TAPE WITH A MARGIN TROWEL TO THE ENTIRE SEAM AND ENSURE THE PAPERLESS DRYWALL JOINT TAPE IS COMPLETELY IN THE SEALANT.
- SEALANT IS REQUIRED TO BE A POLYURETHANE SEALANT ER ASTM C 920, IE: SIKA-1A, TREMCO 116 OR 911, SONNEBORN-NP1, DAP PREMIUM POLYURETHANE, QUICKRETE 8660, OR APPROVED EQUAL.
- ALL VERTICAL FLASHING AND DOOR PANS SHALL BE COATED WITH PD RESIN, GU80 TOPCOAT AND GS88 PIGMENTED SEALER AT THE TIME OF APPLYING EACH PRODUCT.
- PLIDEK "F" SYSTEM: ALL PLYWOOD DECKS REQUIRE THE INTERMEDIATE COAT OF FIBERGLASS AND PD RESIN.

DETAIL LEGEND

1. MIN. 26 GA. GALVANIZED, THRESHOLD FLASHING (BONDERIZED)
2. PAPERLESS DRYWALL JOINT TAPE
3. ASTM C-920 POLYURETHANE SEALANT
4. 2.5 METAL LATH
5. GU80 BASE COAT
6. 3/4 OZ. FIBERGLASS & PD RESIN
7. GU80 TOP COAT
8. GS88 PIGMENTED SEALER



DETAIL-FLASHING OVERLAP

SCALE: N.T.S



41610 Date St., Suite 104 * Murrieta, CA. 92562
 Phone: 800.364.0287 * Fax: 951.834.9555
 WWW.PLIDEK.COM

These waterproofing procedures are not to be used for permit and should be reviewed by the project architect. The waterproofing procedures are not complete plans or specifications and a professional design professional should be contacted prior to performing major waterproofing and repairs.

System: Pli-Dek System
 ICC-ES ESR-2097
 Detail: FLASHING OVERLAP

Job:
 Date: 12-12-2013
 Dwn: H.K

Drawing Number:
 PD-28A