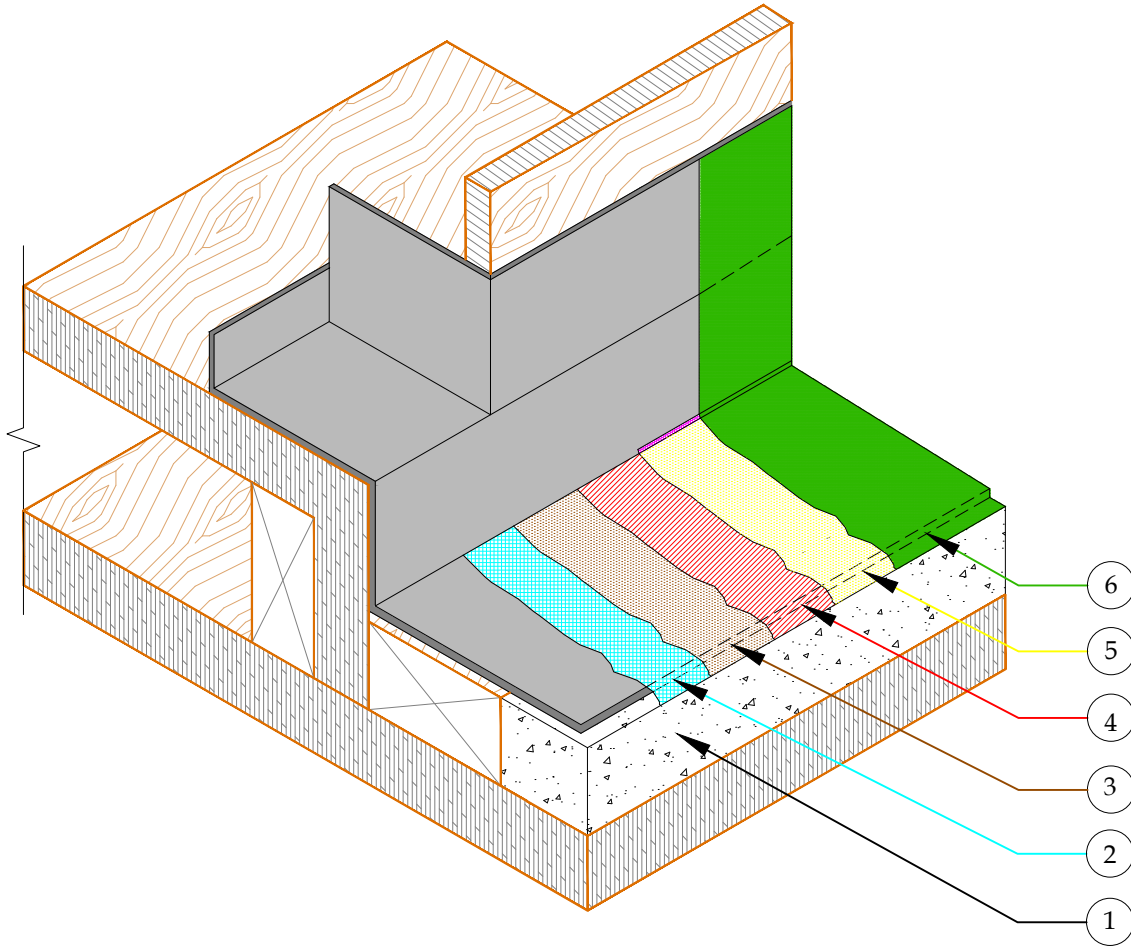


1. 3/4"-1" DEK-C-MENT BY MAX EXTERIOR
2. GU80 PRIMER
3. GU80 CUSTOM TOP COAT (SCREED COAT)
4. 3/4 OZ FIBERGLASS & PD RESIN (2 COATS)
5. GU80 TOP COAT (FINISH COAT)
6. GS88 PIGMENTED SEALER



DETAIL-DEK-C-MENT BY MAX EXTERIOR-DOOR PAN FLASHING-
ISOMETRIC

SCALE: N.T.S



41610 Date St., Suite 104 * Murrieta, CA. 92562
Phone: 800.364.0287 * Fax: 951.834.9555
WWW.PLIDEK.COM

These waterproofing procedures are not to be used for permit and should be reviewed by the project architect. The waterproofing procedures are not complete plans or specifications and a professional design professional should be contacted prior to performing major waterproofing and repairs.

System: Con-Dek by Pli-Dek Systems, Inc.
ICC-ES ESR-2097
Detail: Dek-C-Ment by Max Exterior-Door Pan
Flashing-Isometric

Job:
Date: 08-04-2016
Dwn: M.K.

Drawing Number:
MAX-2