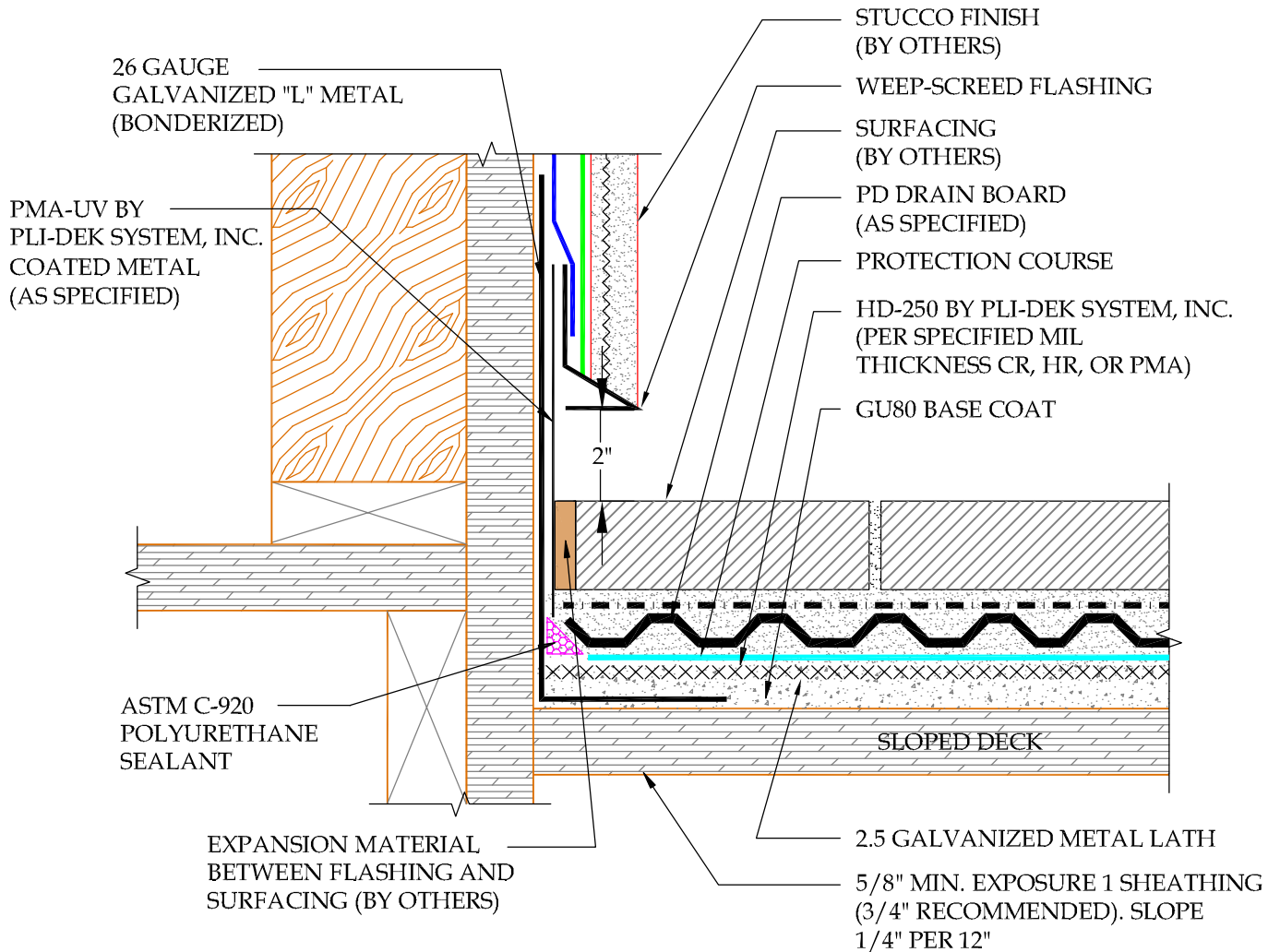


NOTE:  
 VERTICAL LEG OF WALL FLASHING  
 A MIN. OF 4" ABOVE THE FINISH DECK  
 ELEVATION.



DETAIL-DECK TO WALL FLASHING DETAIL

SCALE: N.T.S



41610 Date St., Suite 104 \* Murrieta, CA. 92562  
 Phone: 800.364.0287 \* Fax: 951.834.9555  
 WWW.PLIIDEK.COM

These waterproofing procedures are not to be used for permit and should be reviewed by the project architect. The waterproofing procedures are not complete plans or specifications and a professional design professional should be contacted prior to performing major waterproofing and repairs.

HD-250 by Pli-Dek System, Inc.  
 DECK TO WALL FLASHING DETAIL

Job:		Drawing Number:
Date:	09-1-2013	HD-2
Dwn:	H.K	