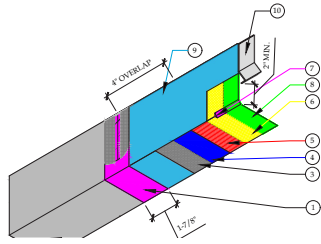


# PD-28A-IW

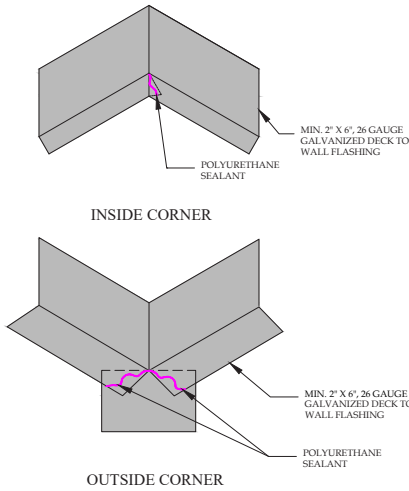
- NOTES:**
- ALL FLASHING TO BE GALVANIZED AND MINIMUM 26 GAUGE.
  - ALL METAL FLASHING SURFACES REQUIRE CLEAN Wipe WITH SOLVENT PRIOR TO INSTALLATION. (MFC, ACETONE, XYLENE, ISOPROPYL ALCOHOL OR VINEGAR).
  - ALL FLASHING OVERLAPS SHALL BE A MIN. OF 4" INSTALLED NOT TO "BUCK" WATER.
  - THE FACE SEAM OF THE SHEET METAL OVERLAP HORIZONTAL AND VERTICAL OVERLAPS, SHALL HAVE AN EMBEIMENT OF 3/4" SEALANT BEAD. (SURFACE SEALANT NOT ACCEPTABLE).
  - (OPTIONAL) APPLY CONTINUOUS SEALANT "I" IN BOTH DIRECTIONS FROM THE OVERLAP SEAM AND EMBED 1/2" PAPERLESS BRWALL JOINT TAPE WITH A MARGIN TROWEL TO THE ENTIRE SEAM AND ENSURE THE PAPERLESS BRWALL JOINT TAPE IS COMPLETELY IN THE SEALANT.
  - SEALANT IS REQUIRED TO BE A POLYURETHANE SEALANT PER ASTM C920. BE Sika-1A, TREMCO 116 OR 911, SONNENBORN-NTF, DAP PREMISE POLYURETHANE, QUICKSET 966 OR APPROVED EQUAL.
  - VERTICAL FLASHING TO BE COATED WITH PD FLASH COAT AND/OR GS88 PRIMEGENT SEALER.
  - ALL EXPOSED METAL TO BE COATED WITH PLI-DEK FINISH COAT.

- DETAIL LEGEND:**
- SELF-ADHERING FIBERGLASS MESH TAPE EMBEDDED IN SEALANT AND COATED WITH FLASH COAT.
  - 26 GAUGE GALVANIZED FLASHING.
  - 25 OZ METAL LATH.
  - GS88 BASE COAT.
  - GS88 PRIMEGENT SEALER.
  - GS88 TOP COAT.
  - CANT HEAD OF POLYURETHANE SEALANT THAT MEETS ASTM C920.
  - GS88 PRIMEGENT SEALER.
  - VERTICAL FLASHING SHALL BE COATED WITH 3/4 OZ. FIBERGLASS AND PD RESIN OR PD FLASH COAT AND SELF-ADHERING MESH TAPE.
  - WEEP SCREED.



DETAIL - FLASHING OVERLAP

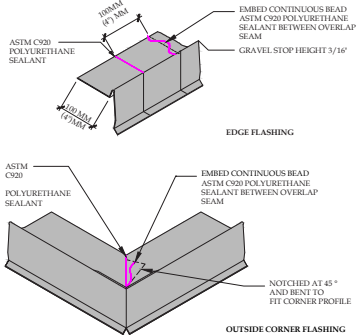
# PD-28C-IW



DETAIL - SHEET METAL CORNERS

# PD-28D-IW

- NOTES:**
- ALL FLASHING TO BE GALVANIZED AND MINIMUM 26 GAUGE.
  - ALL METAL FLASHING SURFACES REQUIRE CLEAN Wipe WITH SOLVENT PRIOR TO INSTALLATION. (MFC, ACETONE, XYLENE, ISOPROPYL ALCOHOL OR VINEGAR).
  - ALL FLASHING OVERLAPS SHALL BE A MIN. OF 4" INSTALLED NOT TO "BUCK" WATER.
  - THE FACE SEAM OF THE SHEET METAL OVERLAP HORIZONTAL AND VERTICAL OVERLAPS, SHALL HAVE AN EMBEIMENT OF 3/4" SEALANT BEAD. (SURFACE SEALANT NOT ACCEPTABLE).
  - (OPTIONAL) APPLY CONTINUOUS SEALANT "I" IN BOTH DIRECTIONS FROM THE OVERLAP SEAM AND EMBED 1/2" PAPERLESS BRWALL JOINT TAPE WITH A MARGIN TROWEL TO THE ENTIRE SEAM AND ENSURE THE PAPERLESS BRWALL JOINT TAPE IS COMPLETELY IN THE SEALANT.
  - SEALANT IS REQUIRED TO BE A POLYURETHANE SEALANT PER ASTM C920. BE Sika-1A, TREMCO 116 OR 911, SONNENBORN-NTF, DAP PREMISE POLYURETHANE, QUICKSET 966 OR APPROVED EQUAL.
  - VERTICAL FLASHING TO BE COATED WITH PD FLASH COAT AND/OR GS88 PRIMEGENT SEALER.
  - ALL EXPOSED METAL TO BE COATED WITH PLI-DEK FINISH COAT.



DETAIL - EDGE METAL FLASHING



## QUICK REFERENCE GUIDE

### WATERPROOF DECK COATINGS

### INCLEMENT WEATHER

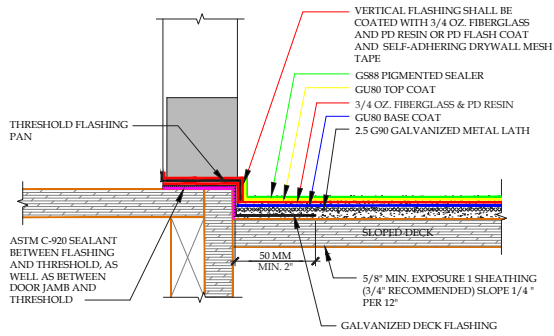


PRODUCT	COVERAGE RATE
PD Stain	150 sq. ft. /gal.
GS88 Sealer	100 sq. ft. /gal.
GU-80 Custom Top Coat	30-175 sq. ft. /bag
GU-80 Gray Base	25-30 sq. ft. /bag
GU-80 Liquid Admix	1 gal. - 1 bag of Gray Base 1 1/4 gal. - 1 bag of Top Coat
GU-80 Top Coat	30-175 sq. ft. /bag
PD Clear	400 sq. ft. /gal. (Smooth Surface) 250-350 sq. ft. /gal. (Rough Surface)
PD Resin	1st Coat - 40-50 sq. ft./gal. 2nd Coat - 70-100 sq. ft./gal.
Fiberglass Mat	1900 sq. ft./roll
Grout Tape	60 yards
GS13 Sealer	400 sq. ft. /gal. (Smooth Surface) 250-350 sq. ft. /gal. (Rough Surface)
Poly Scrim	1080 sq. ft./roll
Seam Paper	1.5" by 300 linear ft.
Templates/Stencils	500 sq. ft. rolls

WATERPROOF DECK COATINGS - IW | COVERAGE RATES

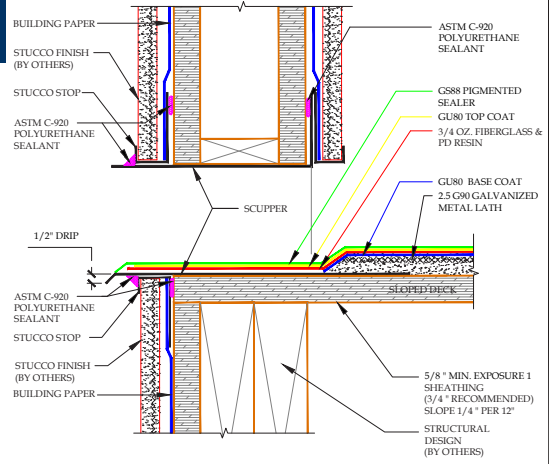


## PD-5-IW



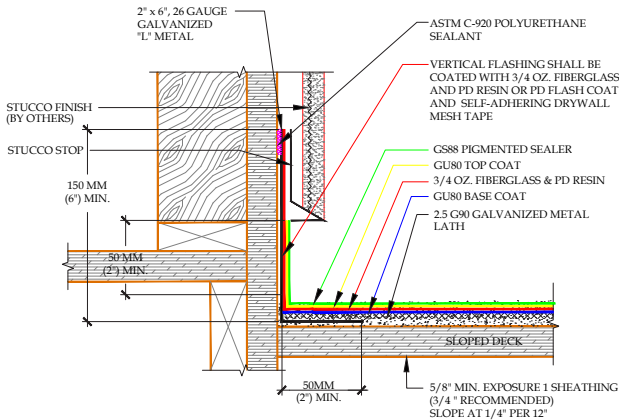
### DETAIL - THRESHOLD FLASHING-TWO PIECE DOOR PAN FLASHING

## PD-22-IW



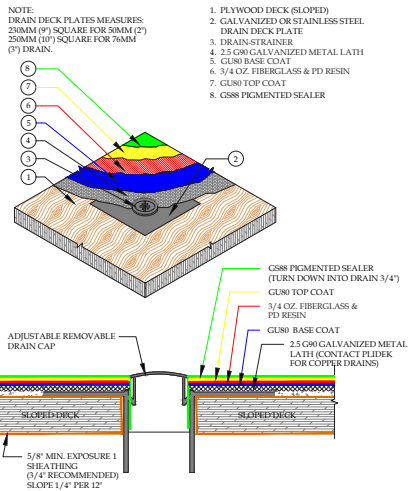
### DETAIL - SCUPPER

## PD-7-IW



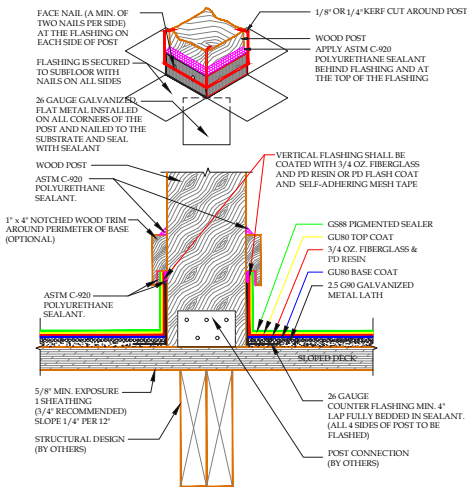
### DETAIL - DECK TO WALL FLASHING- STUCCO OR EIFS

## PD-24-IW



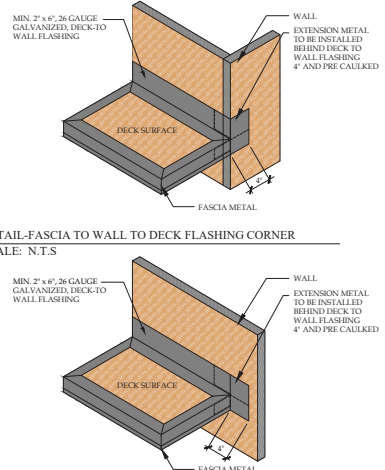
### DETAIL - DECK DRAIN

## PD-19A-IW



### DETAIL - WOOD POST FLASHING

## PD-27-IW



### DETAIL - FASCIA DECK FLASHING