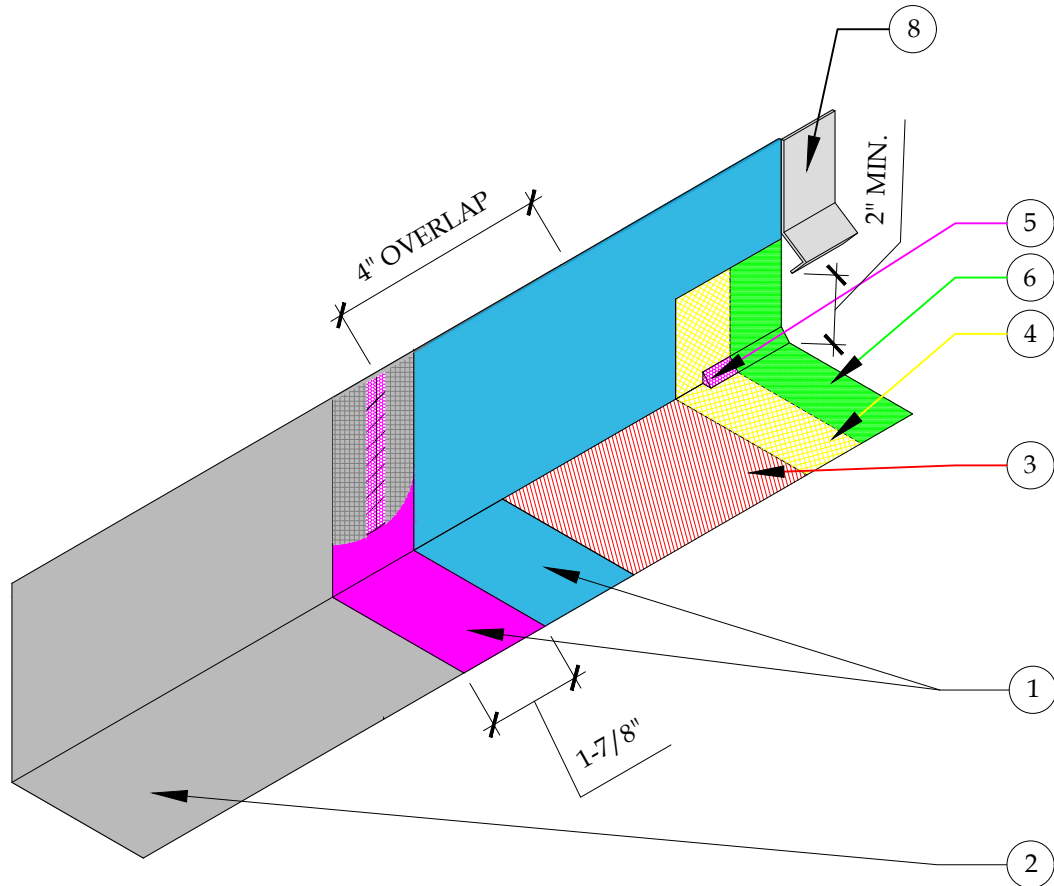


NOTES:

- ALL METAL FLASHING SURFACES REQUIRE CLEAN WIPE WITH SOLVENT PRIOR TO INSTALLATION, (MEK, ACETONE, XYLOL, XYLENE, ISOPROPYL ALCOHOL OR VINEGAR).
- ALL FLASHING OVERLAPS SHALL BE A MIN. OF 4", INSTALLED NOT TO "BUCK" WATER, AND BE CAULKED HORIZONTALLY AND VERTICALLY AT THE FURTHERMOST EDGE WITH A 3/4" BEAD OF SEALANT BETWEEN ANY PIECES OF FLASHING THAT ADJOIN. (SURFACE CAULKING IS NOT ACCEPTABLE).
- WHEN INSTALLED PROPERLY, THE FLASHING OVERLAP SHOULD VISIBLY HAVE CONTINUOUS CAULKING EXPOSED. NEXT, APPLY CONTINUOUS SEALANT 1" IN BOTH DIRECTIONS FROM THE SEAM (VERTICAL AND HORIZONTAL) AND EMBED 1 7/8" PAPERLESS DRYWALL JOINT TAPE WITH A PUTTY KNIFE TO THE ENTIRE SEAM AND ENSURE THE PAPERLESS DRYWALL JOINT TAPE IS COMPLETELY EMBEDDED IN SEALANT.
- ALL VERTICAL FLASHING COATED WITH 3/4 OZ. FIBERGLASS AND PD RESIN OR PD FLASH COAT AND FLASH COAT SEAM TAPE, GU80 TOP COAT, AND GS88 PIGMENTED SEALER AT THE TIME OF APPLYING EACH PRODUCT. REFER TO TB-110 FOR INCLEMENT WEATHER.
- SEALANT IS REQUIRED TO BE A POLYURETHANE SEALANT PER ASTM C 920, IE: SIKA-1A, TREMCO 116 OR 911, SONNEBORN-NP1, DAP PREMIUM POLYURETHANE, QUICKRETE 8660, OR APPROVED EQUAL.

DETAIL LEGEND

1. SELF-ADHERING FIBERGLASS MESH TAPE EMBEDDED IN SEALANT AND COATED WITH FLASH COAT.
2. 26 GAUGE GALVANIZED FLASHING, REFER TO TB-110 FOR ADDITIONAL INFORMATION.
3. 3/4 OZ. FIBERGLASS & PD RESIN
4. GU80 TOP COAT
5. CANT BEAD OF POLYURETHANE SEALANT THAT MEETS ASTM-C920
6. GS88 PIGMENTED SEALER
7. VERTICAL FLASHING SHALL BE COATED WITH 3/4 OZ. FIBERGLASS AND PD RESIN OR PD FLASHCOAT AND FLASHCOAT SEAM TAPE OR SELF-ADHERING MESH TAPE
8. WEEP SCREED



DETAIL-FLASHING OVERLAP

SCALE: N.T.S



These waterproofing procedures are not to be used for permit and should be reviewed by the project architect. The waterproofing procedures are not complete plans or specifications and a professional design professional should be contacted prior to performing major waterproofing and repairs.

System:	Con-Dek System by Pli-Dek Systems, Inc. ICC-ES ESR-2097	
Detail:	FLASHING OVERLAP	
Job:		Drawing Number:
Date:	11/01/2020	CD-15
Dwn:	E.L.	