

MIN. 26 GAUGE
GALVANIZED, THRESHOLD
FLASHING PER TB-110

EMBED THRESHOLD IN A
BED OF POLYURETHANE
SEALANT THAT MEETS
ASTM C-920

VERTICAL FLASHING SHALL BE COATED
WITH 3/4 OZ FIBERGLASS AND PD RESIN
OR PD FLASH COAT AND FLASH COAT
SEAM TAPE OR SELF-ADHERING MESH TAPE
REFER TO TB-110 FOR INCLEMENT WEATHER

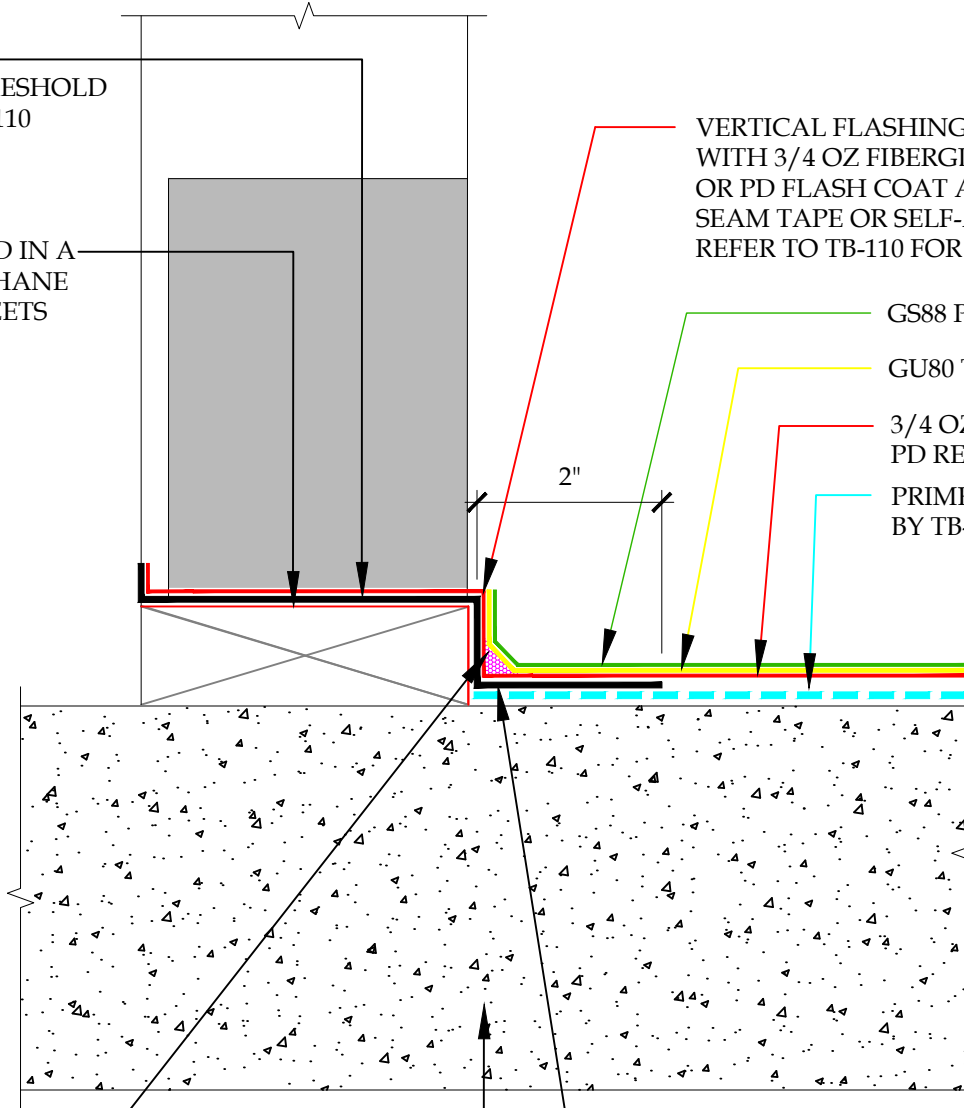
GS88 PIGMENTED SEALER

GU80 TOP COAT

3/4 OZ. FIBERGLASS &
PD RESIN (2 COATS)

PRIMER AS SPECIFIED
BY TB-111

2"



APPLY ASTM C-920
POLYURETHANE JOINT
SEALANT AFTER
COMPLETION OF
FIBERGLASS & PD RESIN

CONCRETE TO SLOPE
A MIN. 1/8" PER 12"

120° ANGLE USED TO SPRING-LOAD.
FLASHING SHALL BE ATTACHED WITH
MASONRY FASTENERS AS NEEDED TO
ELIMINATE DEFLECTION.

DETAIL-DOOR PAN FLASHING-ONE PIECE OVER CONCRETE SUBSTRATE
SCALE: N.T.S.



These waterproofing procedures are not to be used for permit and should be reviewed by the project architect. The waterproofing procedures are not complete plans or specifications and a professional design professional should be contacted prior to performing major waterproofing and repairs.

System: Con-Dek System by Pli-Dek Systems, Inc.
ICC-ES ESR-2097
Detail: DOOR PAN FLASHING
ONE PIECE OVER CONCRETE SUBSTRATE

Job: _____
Date: 11/01/2020
Dwn: E.L.

Drawing Number:
CD-2