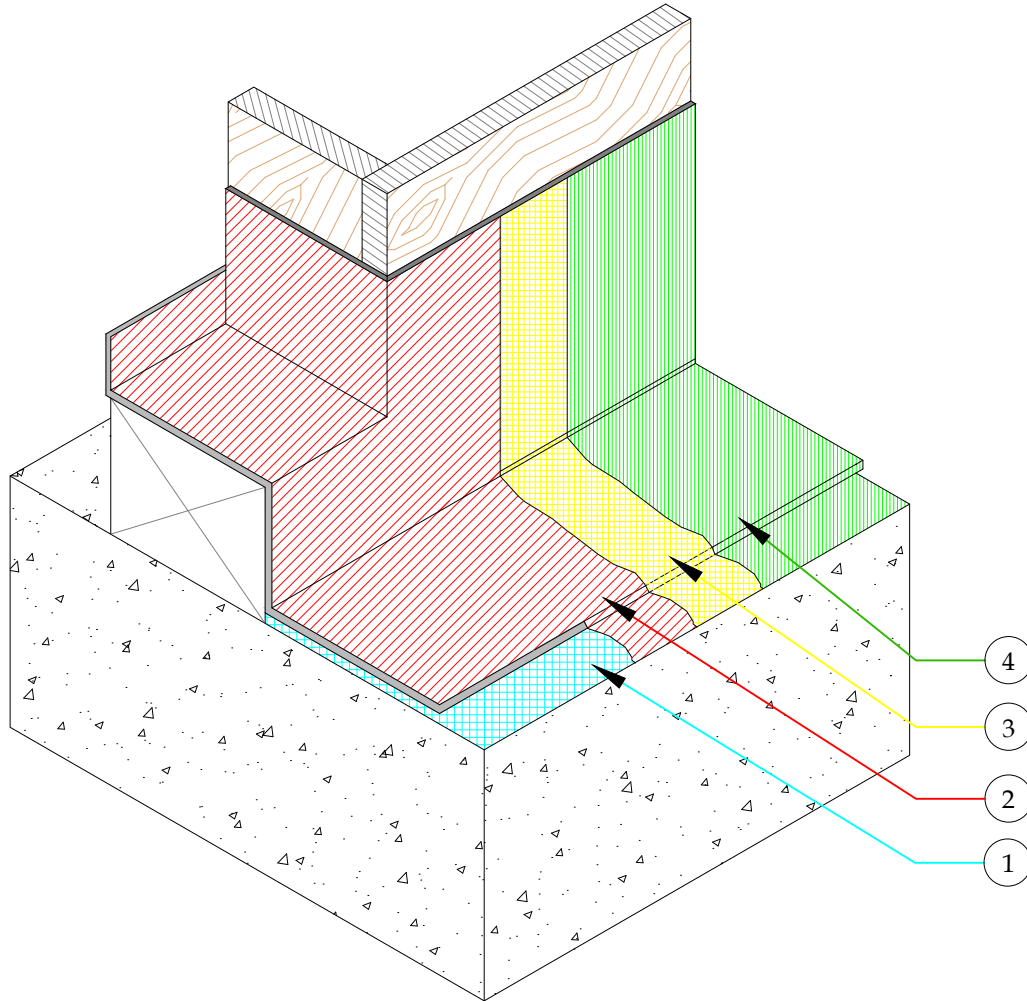


1. PRIMER (AS SPECIFIED BY TB-111)
2. 3/4 OZ FIBERGLASS & PD RESIN (2 COATS)
3/4 OZ FIBERGLASS & PD RESIN OR PD FLASH COAT AND FLASH COAT SEAM TAPE ON THE VERTICAL LEG OF FLASHING. REFER TO TB-110 FOR INCLEMENT WEATHER
3. GU80 TOP COAT
4. GS88 PIGMENTED SEALER



DETAIL-DOOR PAN FLASHING-ONE PIECE OVER CONCRETE
SUBSTRATE - ISOMETRIC

SCALE: N.T.S



These waterproofing procedures are not to be used for permit and should be reviewed by the project architect. The waterproofing procedures are not complete plans or specifications and a professional design professional should be contacted prior to performing major waterproofing and repairs.

System:		Con-Dek System by Pli-Dek Systems, Inc. ICC-ES ESR-2097	
Detail:		DOOR PAN FLASHING ONE PIECE OVER CONCRETE SUBSTRATE-ISOMETRIC	
Job:		Drawing Number:	
Date:	11/01/2020	CD-3	
Dwn:	E.L.		