

VERTICAL FLASHING
 COATED WITH PD FLASH
 COAT AND/OR GS88
 PIGMENTED SEALER
 REFER TO TB-110 FOR
 INCLEMENT WEATHER

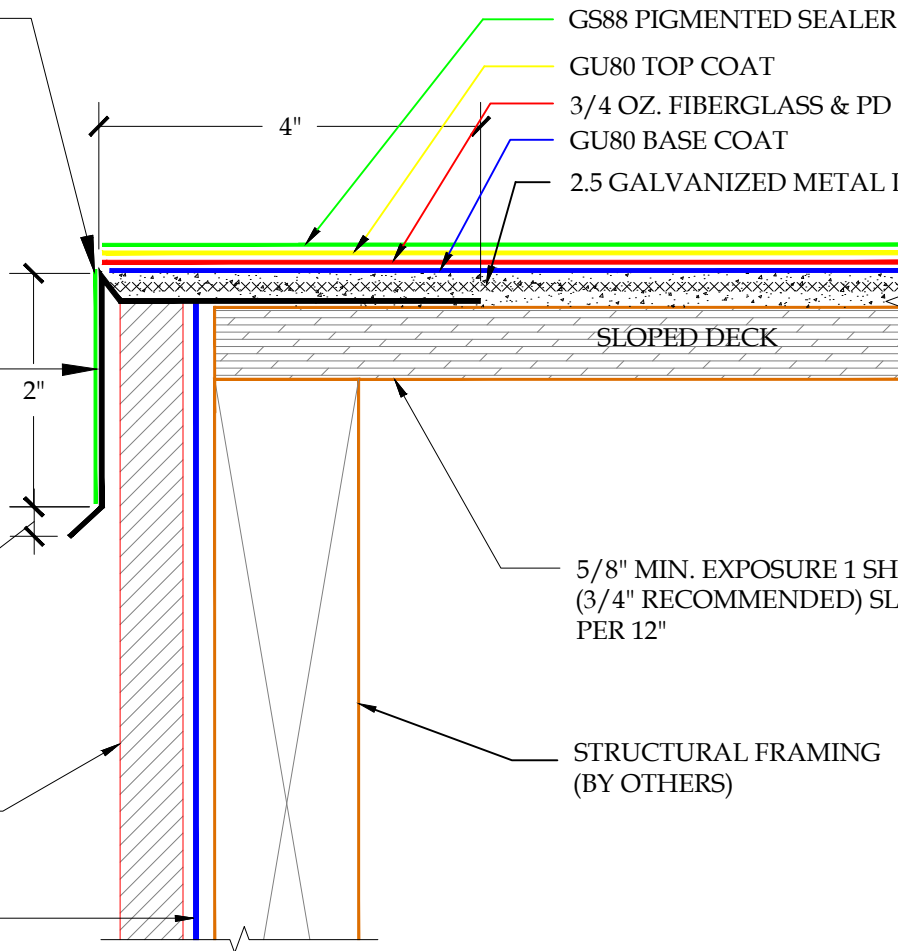
MIN. 26 GAUGE
 GALVANIZED SHEET
 METAL FLASHING
 (3/16" RISE).

1/2" DRIP

FASCIA
 (BY OTHERS)

BUILDING PAPER

4"



GS88 PIGMENTED SEALER
 GU80 TOP COAT
 3/4 OZ. FIBERGLASS & PD RESIN
 GU80 BASE COAT
 2.5 GALVANIZED METAL LATH

SLOPED DECK

5/8" MIN. EXPOSURE 1 SHEATHING
 (3/4" RECOMMENDED) SLOPE 1/4 " PER 12"

STRUCTURAL FRAMING
 (BY OTHERS)

DETAIL-EDGE METAL WOOD FASCIA

SCALE: N.T.S.



These waterproofing procedures are not to be used for permit and should be reviewed by the project architect. The waterproofing procedures are not complete plans or specifications and a professional design professional should be contacted prior to performing major waterproofing and repairs.

System: Pli-Dek System
 ICC-ES ESR-2097
 Detail: EDGE METAL WOOD FASCIA

Job:
 Date: 11/01/2020
 Dwn: E.L.

Drawing Number:
PD-11