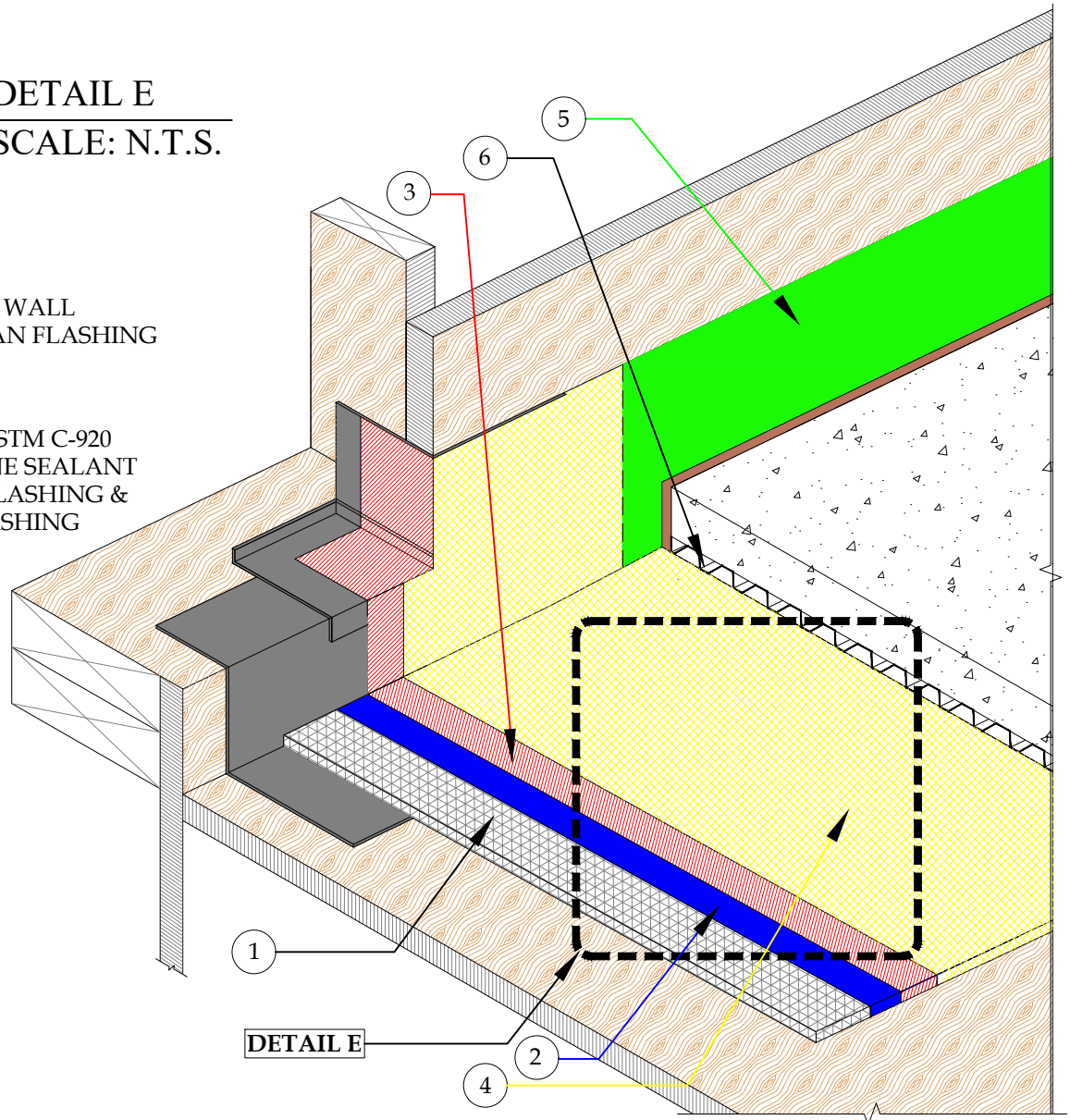


1. 2.5 G90 GALVANIZED METAL LATH
2. GU80 BASE COAT
3. VERTICAL FLASHING SHALL BE COATED WITH 3/4 OZ. FIBERGLASS AND PD RESIN OR PD FLASH COAT AND FLASH COAT SEAM TAPE OR SELF-ADHERING MESH TAPE
4. GU80 TOP COAT
5. GS88 PIGMENTED SEALER
6. PD DRAIN BOARD (OPTIONAL)

**DETAIL E**  
SCALE: N.T.S.

NOTE:  
4" OVERLAP "L" WALL FLASHING & PAN FLASHING

NOTE:  
FULL BED OF ASTM C-920 POLYURETHANE SEALANT BETWEEN "L" FLASHING & DOOR PAN FLASHING



**DETAIL-PLI-DEK "U" SYSTEM - MASONRY OR CONCRETE OVERLAY - INCLEMENT WEATHER**  
SCALE: N.T.S.



**PLI-DEK**  
WATERPROOFING SOLUTIONS  
150 Dascomb Rd., Andover, MA 01810  
Phone: 800.364.0287 \* Fax: 951.834.9555  
WWW.PLIDEK.COM

These waterproofing procedures are not to be used for permit and should be reviewed by the project architect. The waterproofing procedures are not complete plans or specifications and a professional design professional should be contacted prior to performing major waterproofing and repairs.

System:		Pli-Dek System ICC-ES ESR-2097	
Detail:		MASONRY OR CONCRETE OVERLAY INCLEMENT WEATHER	
Job:		Drawing Number:	
Date:	11/01/2020	PD-16-IW	
Dwn:	E.L.		