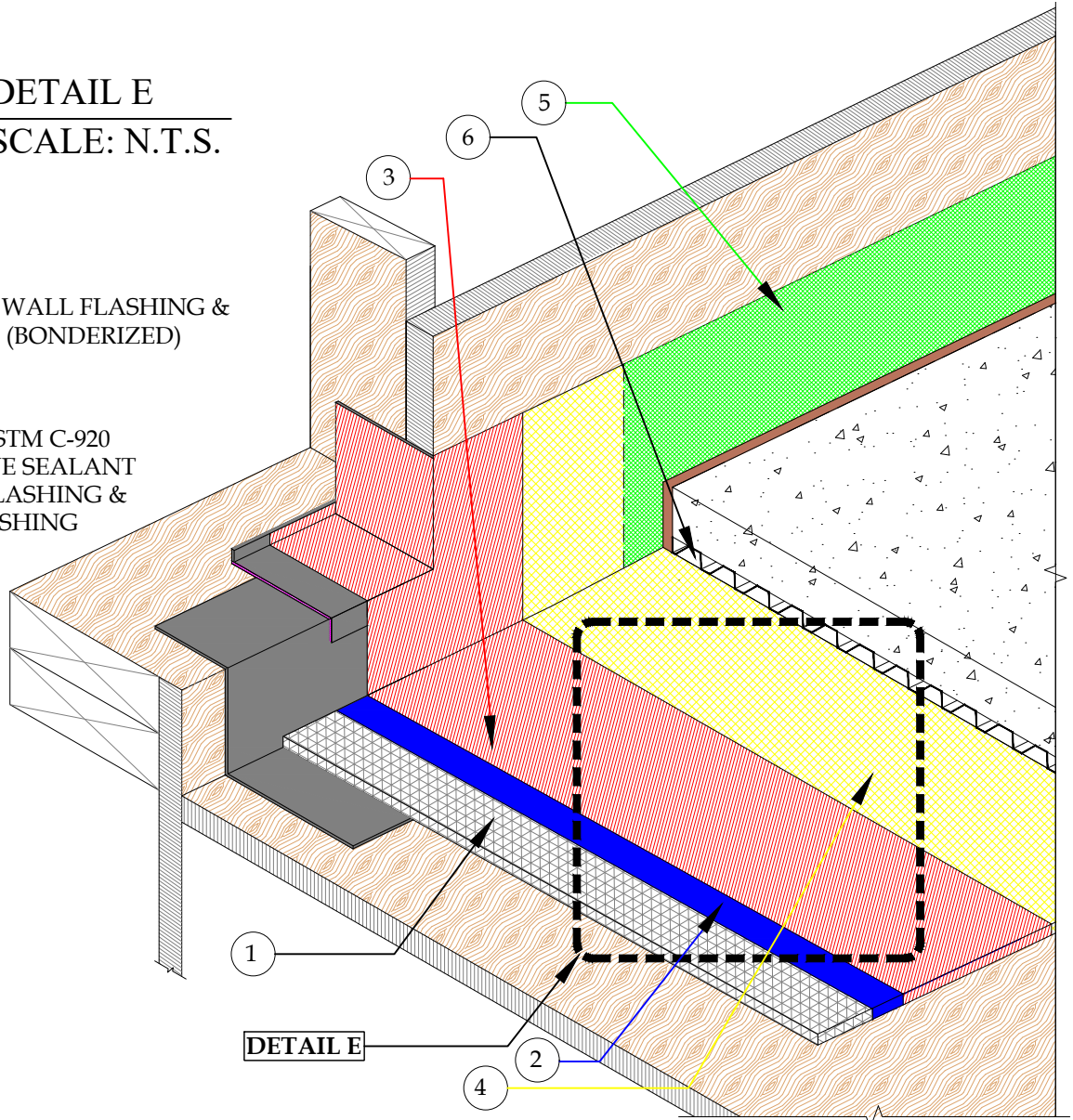


1. 2.5 GALVANIZED METAL LATH
2. GU80 BASE COAT
3. VERTICAL FLASHING MUST BE COATED WITH 3/4 OZ. FIBERGLASS AND RESIN OR PD FLASH COAT AND FLASH COAT SEAM TAPE
4. GU80 TOP COAT
5. GS88 PIGMENTED SEALER
6. PD DRAIN BOARD (OPTIONAL)

DETAIL E
 SCALE: N.T.S.

NOTE:
 4" OVERLAP "L" WALL FLASHING &
 PAN FLASHING (BONDERIZED)

NOTE:
 FULL BED OF ASTM C-920
 POLYURETHANE SEALANT
 BETWEEN "L" FLASHING &
 DOOR PAN FLASHING
 (BONDERIZED)



DETAIL-PLI-DEK "U" SYSTEM - MASONRY OR CONCRETE OVERLAY
 SCALE: N.T.S.



PLI-DEK
 WATERPROOFING SOLUTIONS
 150 Dascomb Rd., Andover, MA 01810
 Phone: 800.364.0287 * Fax: 951.834.9555
 WWW.PLI-DEK.COM

These waterproofing procedures are not to be used for permit and should be reviewed by the project architect. The waterproofing procedures are not complete plans or specifications and a professional design professional should be contacted prior to performing major waterproofing and repairs.

System: Pli-Dek System
 ICC-ES ESR-2097
 Detail: TILE OVERLAY

Job: _____
 Date: 11/01/2020
 Dwn: E.L.

Drawing Number:
PD-16