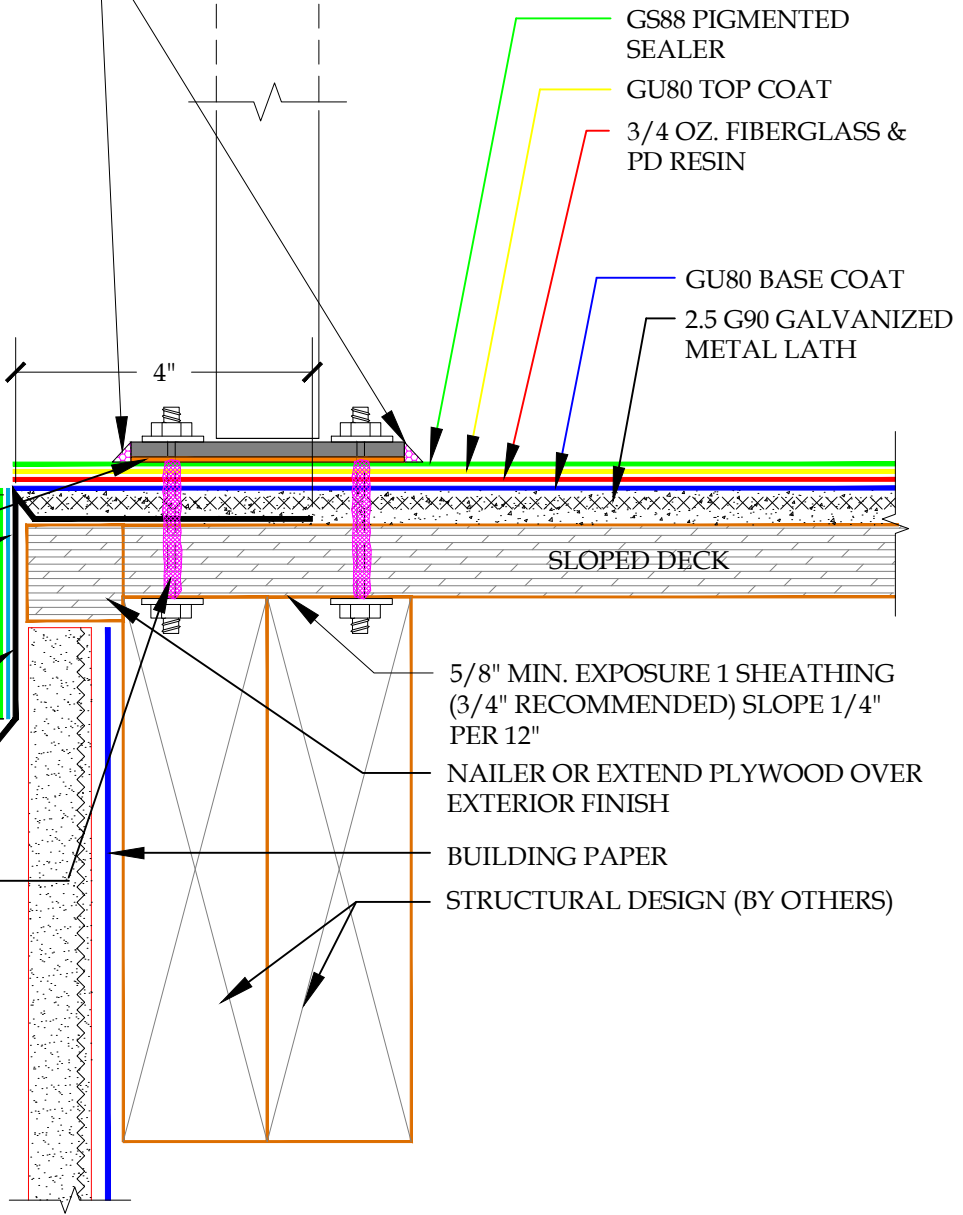


PLAN VIEW

APPLY ASTM C-920 POLYURETHANE SEALANT TO THE INSIDE AND OUTSIDE OF THE FASTENER/PENETRATIONS AS WELL AS UNDER THE BASE PLATE AND AROUND THE PERIMETER OF THE BASE PLATE. SEALANT WILL NEED TO BE MAINTAINED YEARLY. NOTE: LAG BOLT INSTALLATION, DRILL PILOT HOLES FOR LAG BOLTS & INJECT HOLE WITH ASTM C-920 POLYURETHANE SEALANT PRIOR TO INSTALLATION OF LAG BOLT. (BOLT INSTALLATION AND SEALANT ARE THE RESPONSIBILITY OF RAIL INSTALLER)

- GS88 PIGMENTED SEALER
- GU80 TOP COAT
- 3/4 OZ. FIBERGLASS & PD RESIN
- GU80 BASE COAT
- 2.5 G90 GALVANIZED METAL LATH

- NEOPRENE OR EPDM GASKET (OPTIONAL)
- VERTICAL FLASHING COATED WITH PD FLASH COAT AND/OR GS88 PIGMENTED SEALER
- MIN. 26 GAUGE GALVANIZED SHEET METAL FLASHING 1/2" DRIP (3/16" RISE)
- ATTACHMENT OF RAIL TO BE SEALED WITH ASTM-C-920 POLYURETHANE SEALANT



DETAIL-METAL DECK RAIL- SURFACE MOUNTED - INCLEMENT WEATHER

SCALE: N.T.S.



**PLI DEK**  
 WATERPROOFING SOLUTIONS  
 150 Dascomb Rd., Andover, MA 01810  
 Phone: 800.364.0287 \* Fax: 951.834.9555  
 WWW.PLIDEK.COM

These waterproofing procedures are not to be used for permit and should be reviewed by the project architect. The waterproofing procedures are not complete plans or specifications and a professional design professional should be contacted prior to performing major waterproofing and repairs.

|         |  |                 |
|---------|--|-----------------|
| System: | Pli-Dek System<br>ICC-ES ESR-2097                      |                 |
| Detail: | METAL DECK RAIL - SURFACE MOUNTED<br>INCLEMENT WEATHER |                 |
| Job:    |  | Drawing Number: |
| Date:   | 11/01/2020   | PD-17A-IW       |
| Dwn:    | E.L.   |                 |