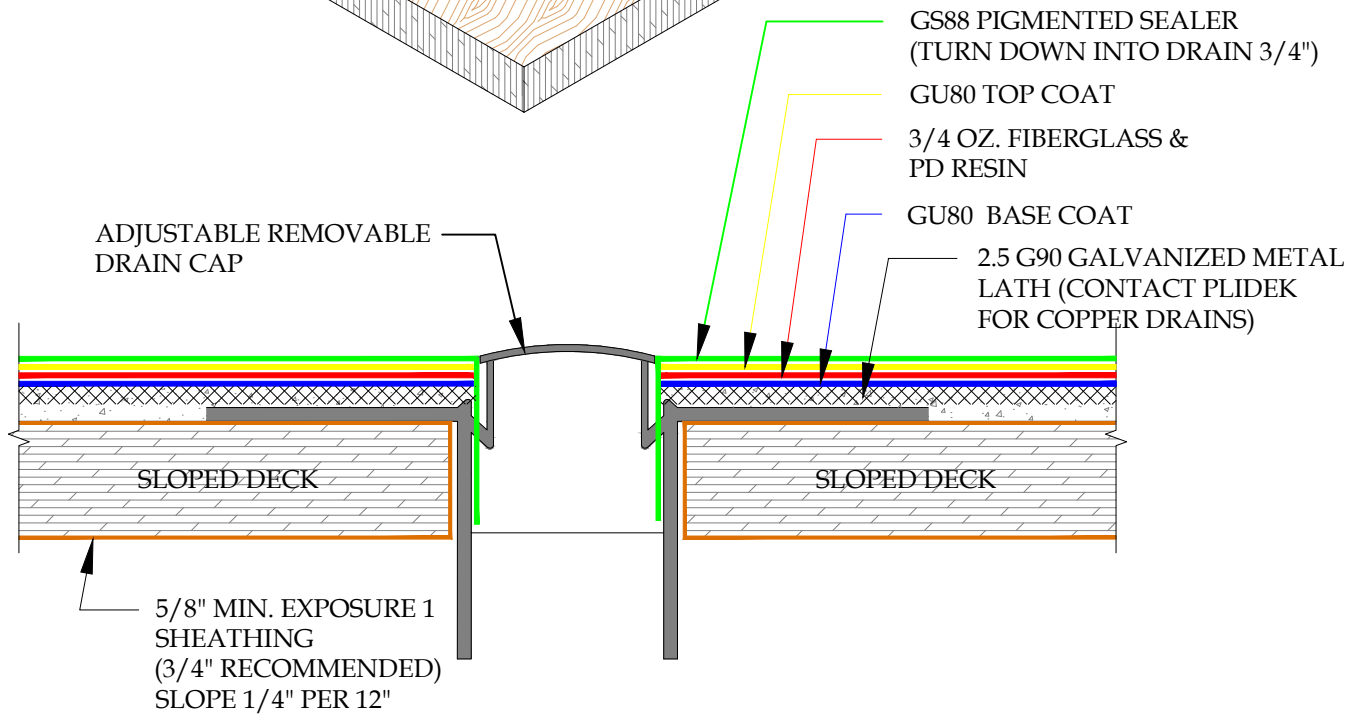
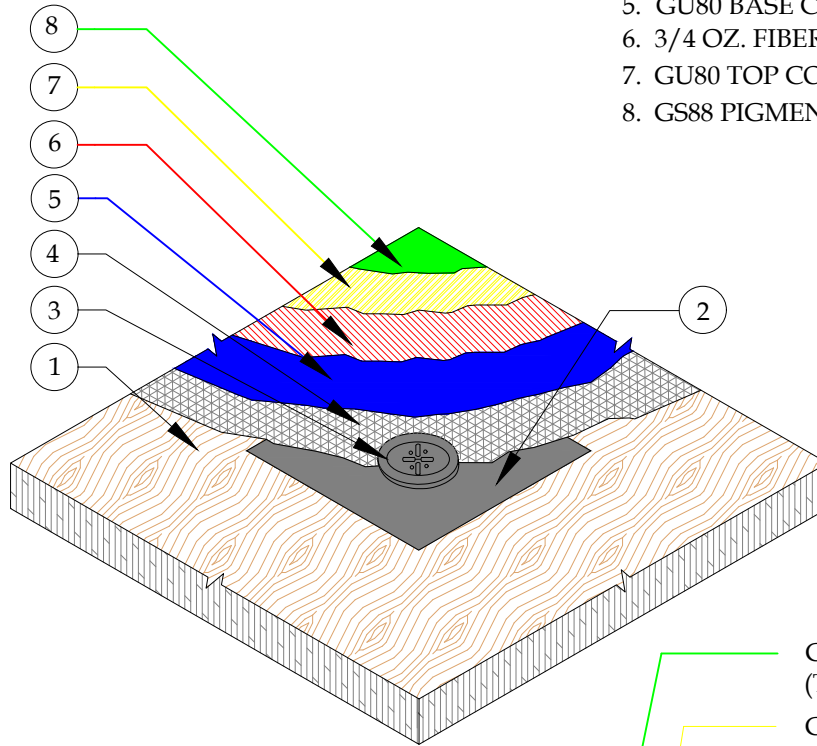


NOTE:
DRAIN DECK PLATES MEASURES:
230MM (9") SQUARE FOR 50MM (2")
250MM (10") SQUARE FOR 76MM
(3") DRAIN.

1. PLYWOOD DECK (SLOPED)
2. GALVANIZED OR STAINLESS STEEL DRAIN DECK PLATE
3. DRAIN-STRAINER
4. 2.5 G90 GALVANIZED METAL LATH
5. GU80 BASE COAT
6. 3/4 OZ. FIBERGLASS & PD RESIN
7. GU80 TOP COAT
8. GS88 PIGMENTED SEALER



DETAIL-GALVANIZED DECK DRAIN-INCLEMENT WEATHER
SCALE: N.T.S.



PLI DEK
WATERPROOFING SOLUTIONS
150 Dascomb Rd., Andover, MA 01810
Phone: 800.364.0287 * Fax: 951.834.9555
WWW.PLIDEK.COM

These waterproofing procedures are not to be used for permit and should be reviewed by the project architect. The waterproofing procedures are not complete plans or specifications and a professional design professional should be contacted prior to performing major waterproofing and repairs.

System:		Pli-Dek System ICC-ES ESR-2097	
Detail:		GALVANIZED DECK DRAIN INCLEMENT WEATHER	
Job:		Drawing Number:	
Date:	11/01/2020	PD-24-IW	
Dwn:	E.L.		