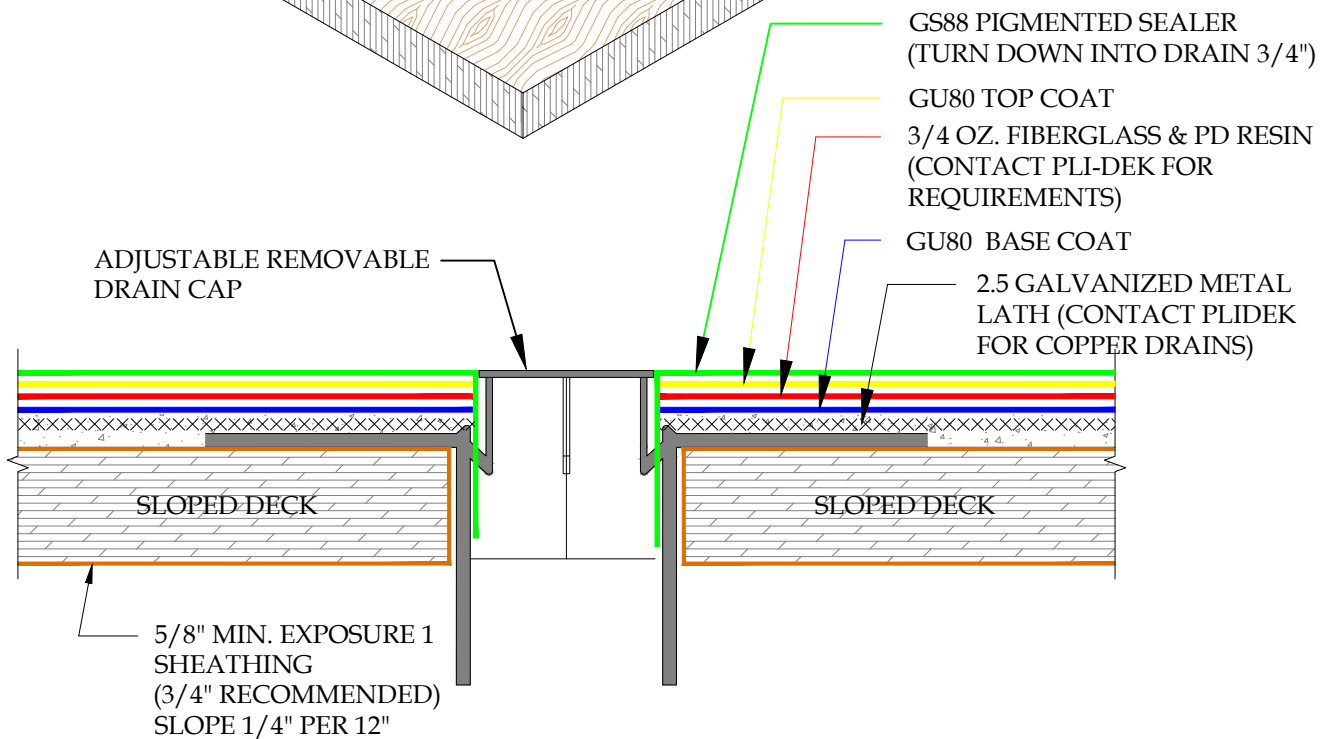
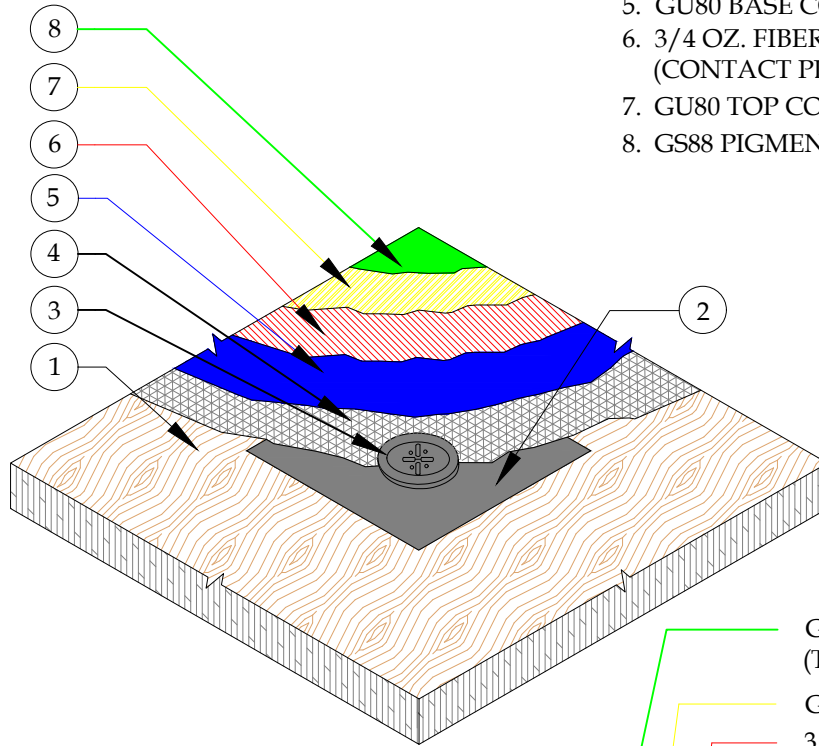


NOTE:  
DRAIN DECK PLATES MEASURES:  
230MM (9") SQUARE FOR 50MM (2")  
250MM (10") SQUARE FOR 76MM  
(3") DRAIN.

1. PLYWOOD DECK (SLOPED)
2. GALVANIZED OR STAINLESS DRAIN DECK PLATE
3. DRAIN-STRAINER
4. 2.5 GALVANIZED METAL LATH
5. GU80 BASE COAT
6. 3/4 OZ. FIBERGLASS & PD RESIN (CONTACT PLI-DEK FOR REQUIREMENTS)
7. GU80 TOP COAT
8. GS88 PIGMENTED SEALER



## DETAIL-GALVANIZED DECK DRAIN

SCALE: N.T.S.



**PLI-DEK**  
WATERPROOFING SOLUTIONS  
150 Dascomb Rd., Andover, MA 01810  
Phone: 800.364.0287 \* Fax: 951.834.9555  
WWW.PLI-DEK.COM

These waterproofing procedures are not to be used for permit and should be reviewed by the project architect. The waterproofing procedures are not complete plans or specifications and a professional design professional should be contacted prior to performing major waterproofing and repairs.

System: Pli-Dek System  
ICC-ES ESR-2097  
Detail: GALVANIZED DECK DRAIN

Job: \_\_\_\_\_  
Date: 11/01/2020  
Dwn: E.L.

Drawing Number:  
**PD-24**