

WATERPROOFING OF BRICK OR
BLOCK ABOVE THIS TRANSITION
IS THE RESPONSIBILITY OF OTHERS

BRICK OR BLOCK WALL

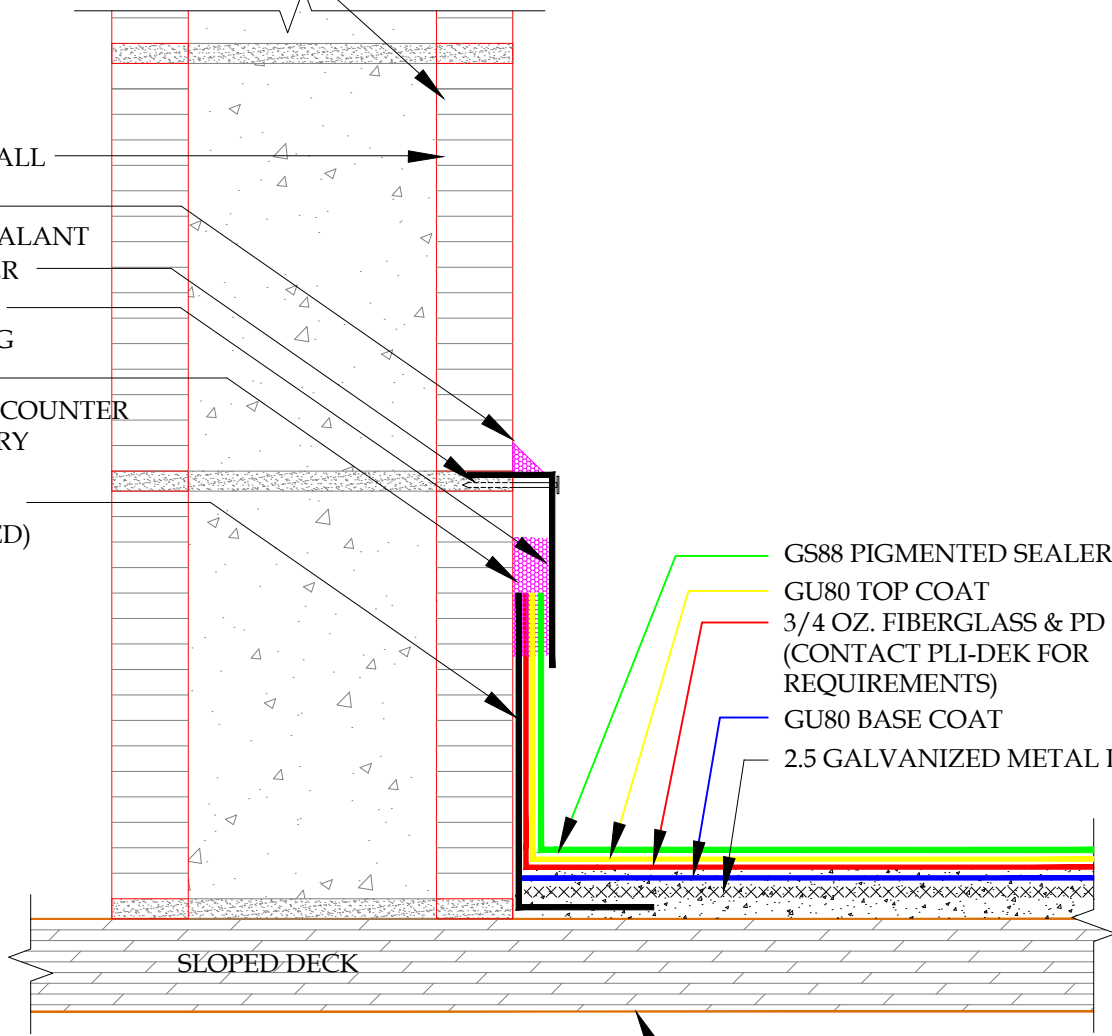
ASTM C-920
POLYURETHANE SEALANT
MASONRY FASTENER

1/2" x 4", 26 GAUGE
COUNTER FLASHING

POLYURETHANE
CAULKING JOINT @ COUNTER
FLASHING/MASONRY

2" x 6", 26 GAUGE "L"
METAL (BONDERIZED)

GS88 PIGMENTED SEALER
GU80 TOP COAT
3/4 OZ. FIBERGLASS & PD RESIN
(CONTACT PLI-DEK FOR
REQUIREMENTS)
GU80 BASE COAT
2.5 GALVANIZED METAL LATH



SLOPED DECK

5/8" MIN. EXPOSURE 1 SHEATHING
(3/4" RECOMMENDED) SLOPE 1/4"
PER 12"

DETAIL-BLOCK/BRICK TO DECK

SCALE: N.T.S.



These waterproofing procedures are not to be used for permit and should be reviewed by the project architect. The waterproofing procedures are not complete plans or specifications and a professional design professional should be contacted prior to performing major waterproofing and repairs.

System: Pli-Dek System
ICC-ES ESR-2097
Detail: BLOCK/BRICK TO DECK

Job: _____
Date: 11/01/2020
Dwn: E.L.

Drawing Number:
PD-26