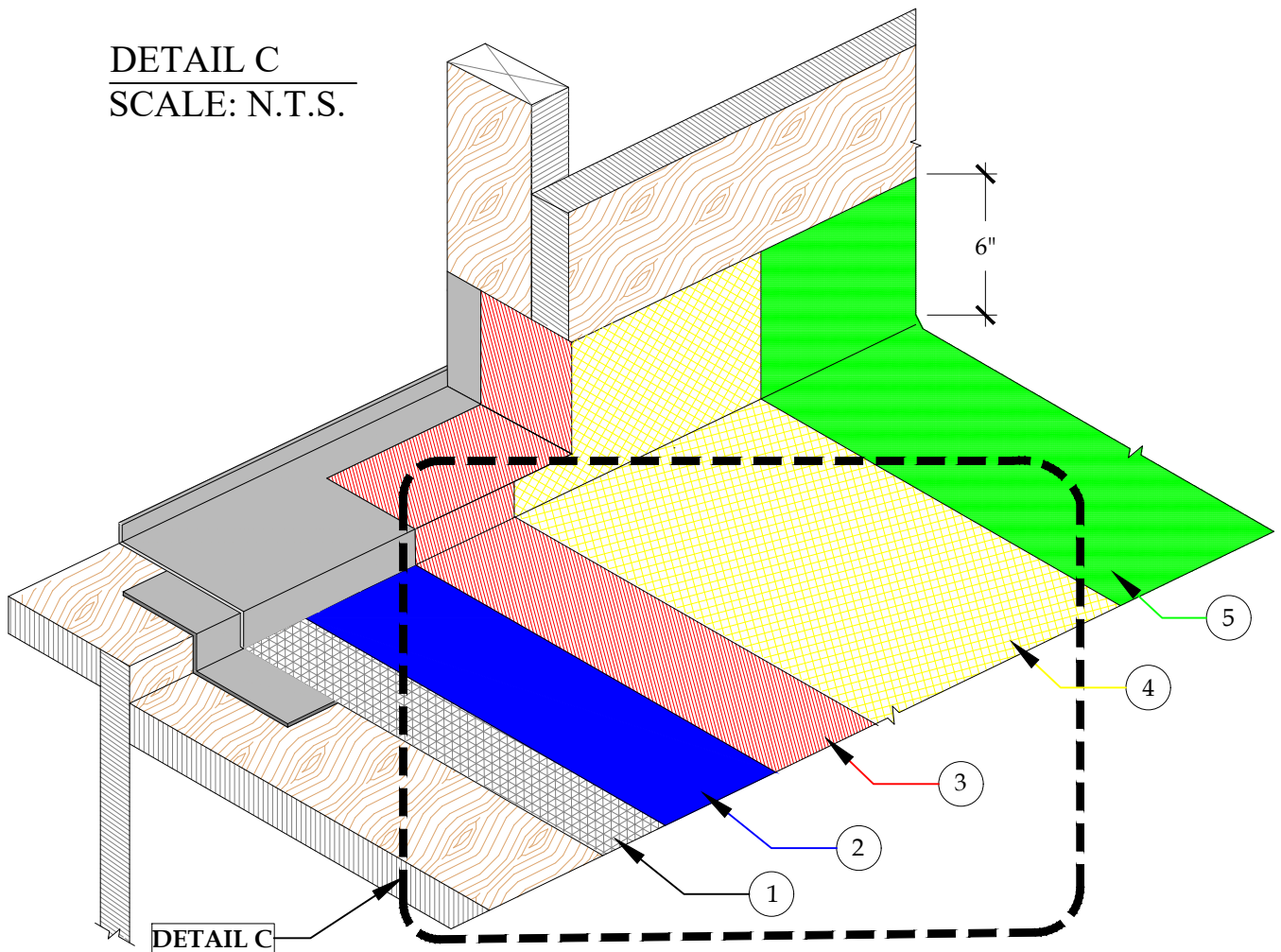


1. 2.5 G90 GALVANIZED METAL LATH
2. GU80 BASE COAT
3. VERTICAL FLASHING SHALL BE COATED WITH 3/4 OZ. FIBERGLASS AND PD RESIN OR PD FLASHCOAT AND FLASHCOAT SEAM TAPE OR SELF-ADHERING MESH TAPE
4. GU80 TOP COAT
5. GS88 PIGMENTED SEALER

**DETAIL C**  
SCALE: N.T.S.



**DETAIL-THRESHOLD FLASHING-TWO PIECE DOOR PAN FLASHING**  
**ISOMETRIC-INCLEMENT WEATHER**

SCALE: N.T.S.



**PLI DEK**  
WATERPROOFING SOLUTIONS  
150 Dascomb Rd., Andover, MA 01810  
Phone: 800.364.0287 \* Fax: 951.834.9555  
WWW.PLIIDEK.COM

These waterproofing procedures are not to be used for permit and should be reviewed by the project architect. The waterproofing procedures are not complete plans or specifications and a professional design professional should be contacted prior to performing major waterproofing and repairs.

System:		Pli-Dek System ICC-ES ESR-2097
Detail:		THRESHOLD FLASHING - TWO PIECE DOOR PAN FLASHING - ISOMETRIC INCLEMENT WEATHER
Job:		Drawing Number:
Date:	11/01/2020	PD-6-IW
Dwn:	E.L.	