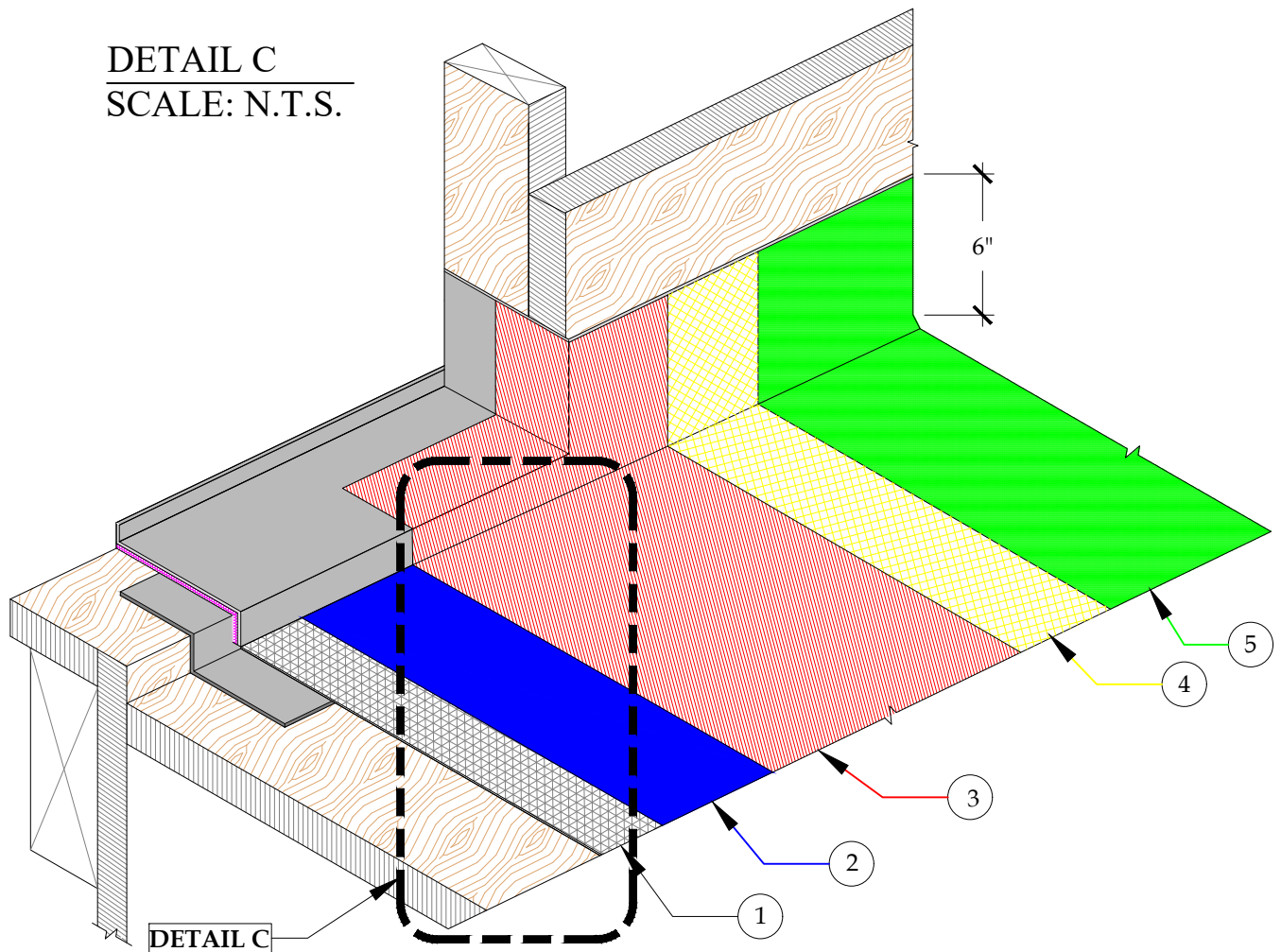


1. 2.5 GALVANIZED METAL LATH
2. GU80 BASE COAT
3. VERTICAL FLASHING CAN BE COATED WITH 3/4 OZ. FIBERGLASS & PD RESIN OR PD FLASH COAT AND FLASH COAT SEAM TAPE OR SELF-ADHERING DRYWALL MESH TAPE. REFER TO TB-110 FOR INCLEMENT WEATHER
4. GU80 TOP COAT
5. GS88 PIGMENTED SEALER

DETAIL C
SCALE: N.T.S.



DETAIL-THRESHOLD FLASHING-TWO PIECE DOOR PAN FLASHING
ISOMETRIC

SCALE: N.T.S.



PLI-DEK
WATERPROOFING SOLUTIONS
150 Dascomb Rd., Andover, MA 01810
Phone: 800.364.0287 * Fax: 951.834.9555
WWW.PLI-DEK.COM

These waterproofing procedures are not to be used for permit and should be reviewed by the project architect. The waterproofing procedures are not complete plans or specifications and a professional design professional should be contacted prior to performing major waterproofing and repairs.

System:		Pli-Dek System ICC-ES ESR-2097	
Detail:		THRESHOLD FLASHING - TWO PIECE DOOR PAN FLASHING - ISOMETRIC	
Job:		Drawing Number:	
Date:	11/01/2020	PD-6	
Dwn:	E.L.		