

HOT RUBBERIZED ASPHALT (HR)  
WATERPROOFING MEMBRANE BY  
PLI-DEK SYSTEMS, INC.

DETAIL COAT OF HOT  
RUBBERIZED  
ASPHALT (HR)  
WATERPROOFING  
MEMBRANE BY  
PLI-DEK SYSTEMS, INC.

OVERBURDEN

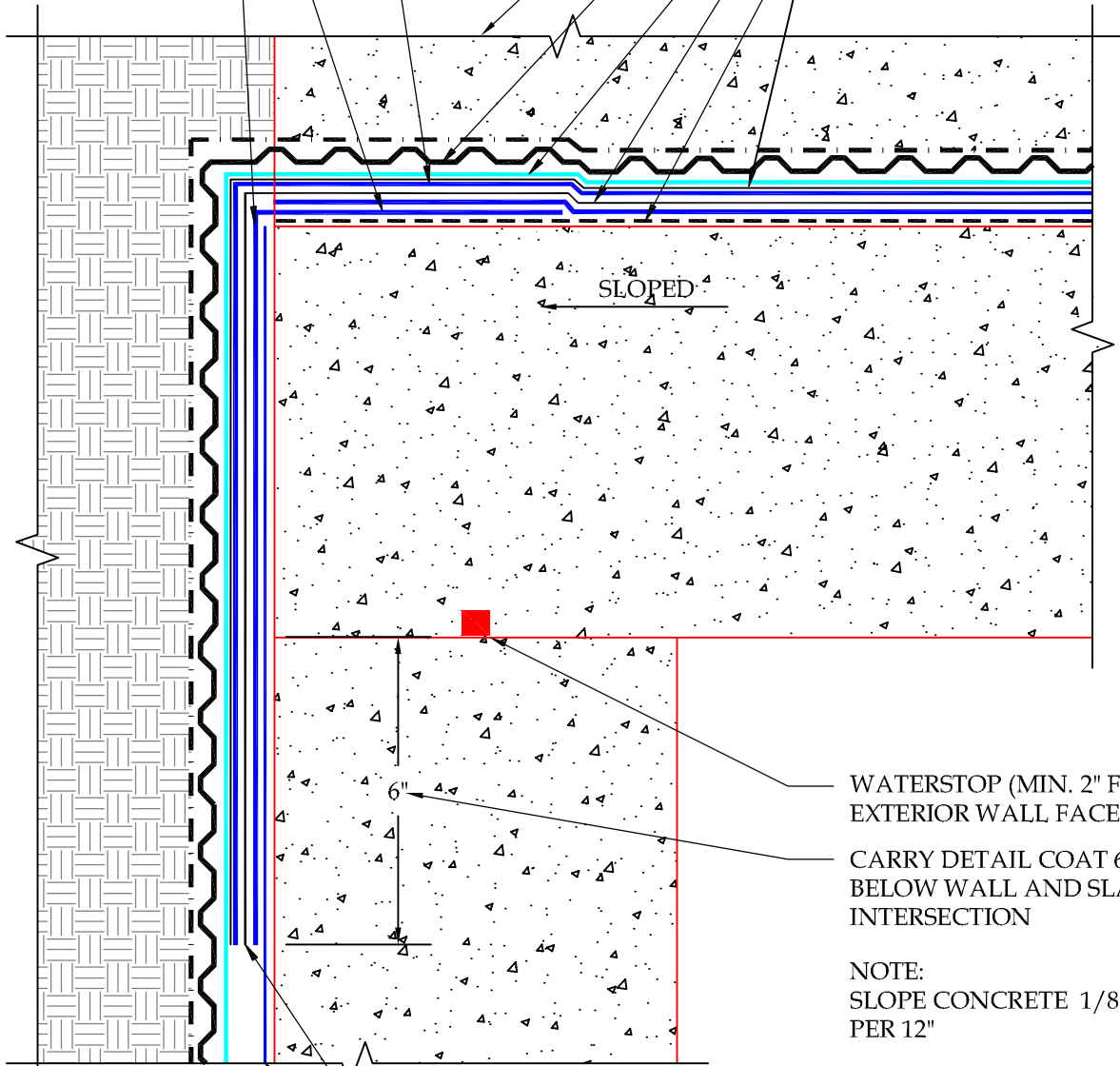
PD DRAIN BOARD  
(AS SPECIFIED)

PROTECTION BOARD

PD-2014 REEMAY FABRIC

ASPHALT PRIMER

SEPARATION SHEET



WATERSTOP (MIN. 2" FROM  
EXTERIOR WALL FACE)

CARRY DETAIL COAT 6"  
BELOW WALL AND SLAB  
INTERSECTION

NOTE:  
SLOPE CONCRETE 1/8"  
PER 12"

PD-2014 REEMAY FABRIC

CR OR PMA BY  
PLI-DEK SYSTEMS, INC.

## DETAIL-BELOW GRADE TO HORIZONTAL SLAB TRANSITION

SCALE: N.T.S



41610 Date St., Suite 104 \* Murrieta, CA. 92562  
Phone: 800.364.0287 \* Fax: 951.834.9555  
WWW.PLIIDEK.COM

These waterproofing procedures are not to be used for permit and should be reviewed by the project architect. The waterproofing procedures are not complete plans or specifications and a professional design professional should be contacted prior to performing major waterproofing and repairs.

System: Hot Rubberized Asphalt (HR) by Pli-Dek Systems, Inc.

Detail: BELOW GRADE HORIZONTAL SLAB TRANSITION

Job: \_\_\_\_\_  
Date: 05-3-2013  
Dwn: H.K

Drawing Number:  
**HR-1**