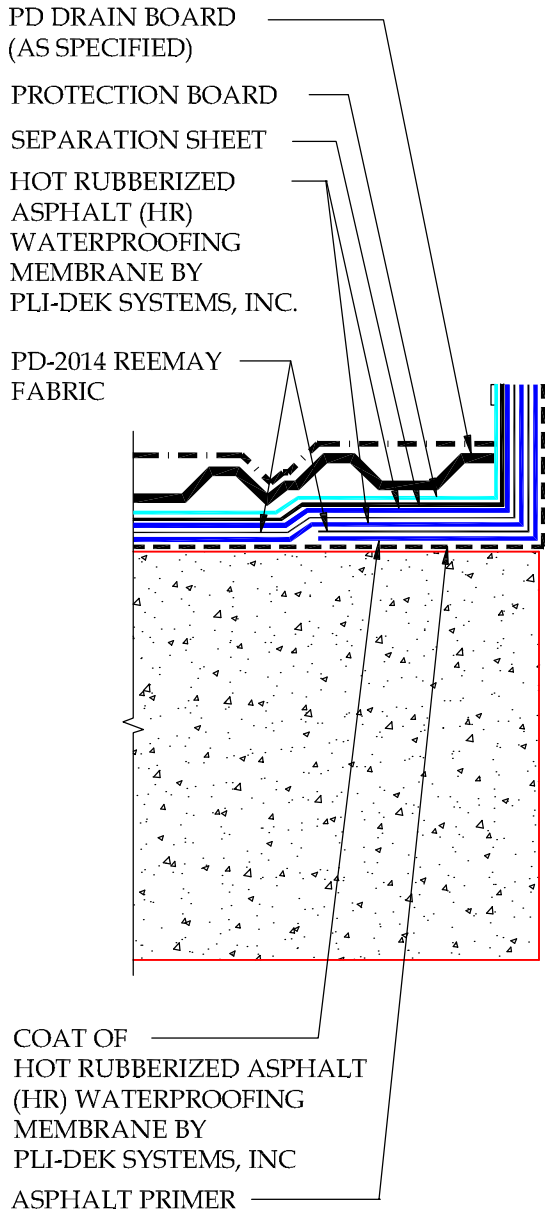
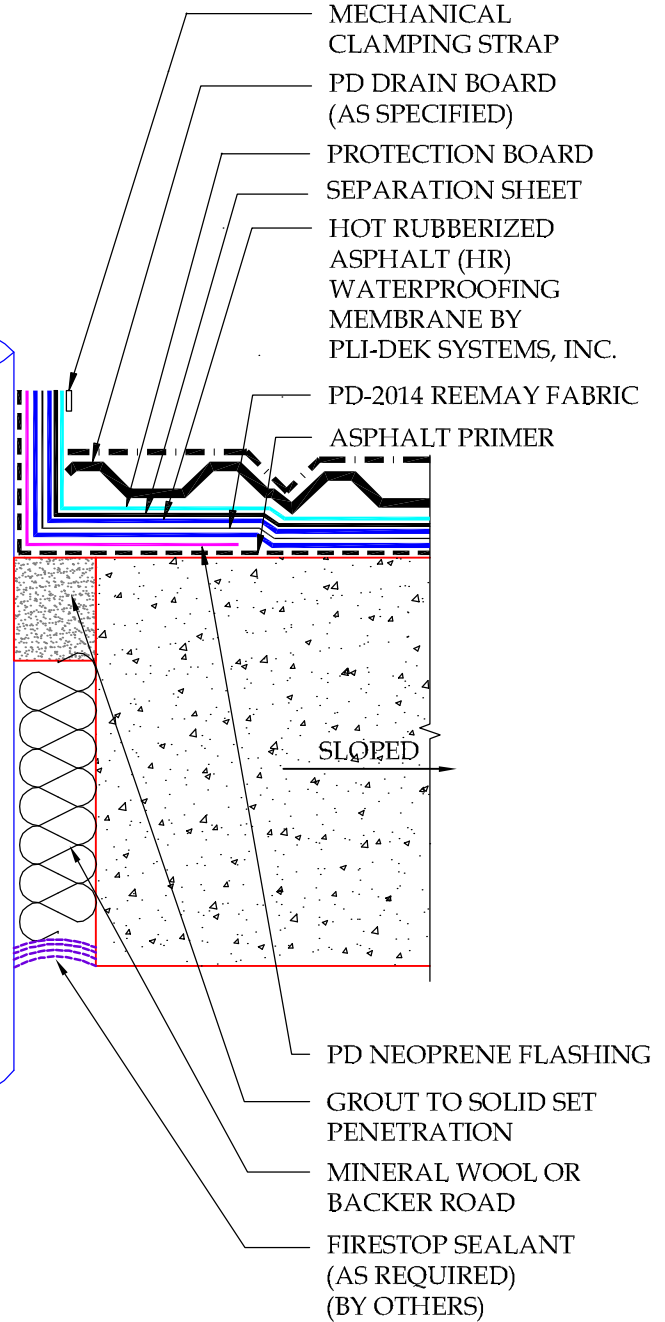


OPTION A



NOTE:
PROPERLY PREPARE PENETRATION

OPTION B



NOTE:
SLOPE CONCRETE 1/8"
PER 12"

DETAIL-TREATMENT OF PENETRATIONS

SCALE: N.T.S.



41610 Date St., Suite 104 * Murrieta, CA. 92562
Phone: 800.364.0287 * Fax: 951.834.9555
WWW.PLIIDEK.COM

These waterproofing procedures are not to be used for permit and should be reviewed by the project architect. The waterproofing procedures are not complete plans or specifications and a professional design professional should be contacted prior to performing major waterproofing and repairs.

System: Hot Rubberized Asphalt (HR) by Pli-Dek Systems, Inc.
Detail: TREATMENTS OF PENETRATIONS

Job: _____
Date: 05-3-2013
Dwn: H.K

Drawing Number:
HR-4