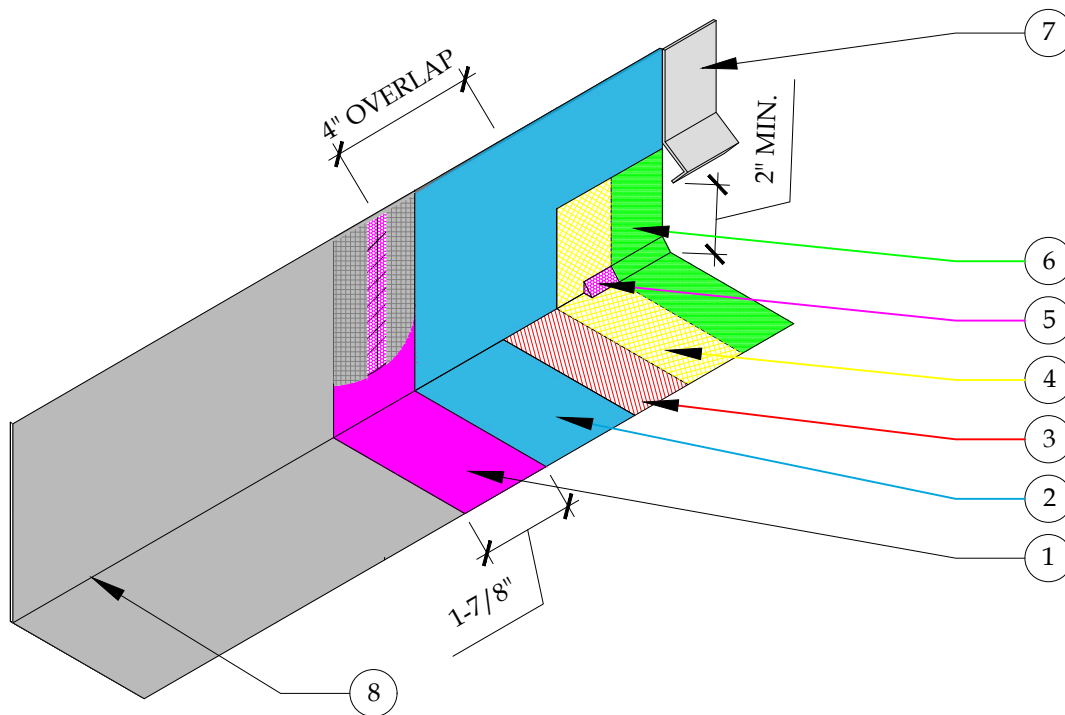


NOTES:

- ALL METAL FLASHING SURFACES REQUIRE CLEAN WIPE WITH SOLVENT PRIOR TO INSTALLATION, (MEK, ACETONE, XYLOL, XYLENE, ISOPROPYL ALCOHOL OR VINEGAR).
- ALL FLASHING OVERLAPS SHALL BE A MIN. OF 4", INSTALLED NOT TO "BUCK" WATER, AND BE CAULKED HORIZONTALLY AND VERTICALLY AT THE FURTHERMOST EDGE WITH A 3/4" BEAD OF SEALANT BETWEEN ANY PIECES OF FLASHING THAT ADJOIN. (SURFACE CAULKING IS NOT ACCEPTABLE).
- WHEN INSTALLED PROPERLY, THE FLASHING OVERLAP SHOULD VISIBLY HAVE CONTINUOUS CAULKING EXPOSED. NEXT, APPLY CONTINUOUS SEALANT 1" IN BOTH DIRECTIONS FROM THE SEAM (VERTICAL AND HORIZONTAL) AND EMBED 1 7/8" PAPERLESS DRYWALL JOINT TAPE WITH A PUTTY KNIFE TO THE ENTIRE SEAM AND ENSURE THE SELF-ADHERING MESH TAPE IS COMPLETELY EMBEDDED IN SEALANT.
- ALL VERTICAL FLASHING SHALL BE COATED WITH 3/4 OZ. FIBERGLASS AND PD RESIN OR PD FLASH COAT AND FLASH COAT SEAM TAPE, GU80 TOP COAT, AND GS88 PIGMENTED SEALER AT THE TIME OF APPLYING EACH PRODUCT.
- SEALANT IS REQUIRED TO BE A MOISTURE CURE POLYURETHANE SEALANT

DETAIL LEGEND

1. FLASH COAT SEAM TAPE OR SELF-ADHERING FIBERGLASS MESH TAPE EMBEDDED IN SEALANT AND COATED WITH FLASH COAT.
2. PD FLASH COAT
3. 3/4 OZ. FIBERGLASS & PD RESIN
4. GU80 TOP COAT
5. CANT BEAD OF POLYURETHANE SEALANT THAT MEETS ASTM-C920
6. TOP COAT GS88 PIGMENTED SEALER
7. WEEP SCREED
8. 26 GAUGE GALVANIZED FLASHING, REFER TO TB-110 FOR ADDITIONAL INFORMATION.



DETAIL-FLASHCOAT FLASHING DETAIL-INCLEMENT WEATHER

SCALE: N.T.S



These waterproofing procedures are not to be used for permit and should be reviewed by the project architect. The waterproofing procedures are not complete plans or specifications and a professional design professional should be contacted prior to performing major waterproofing and repairs.

System:	Con-Dek System by Pli-Dek Systems, Inc. ICC-ES ESR-2097	
Detail:	FLASHCOAT FLASHING DETAIL INCLEMENT WEATHER	
Job:		Drawing Number:
Date:	04/01/2019	CD-15-IW
Dwn:	E.L.	