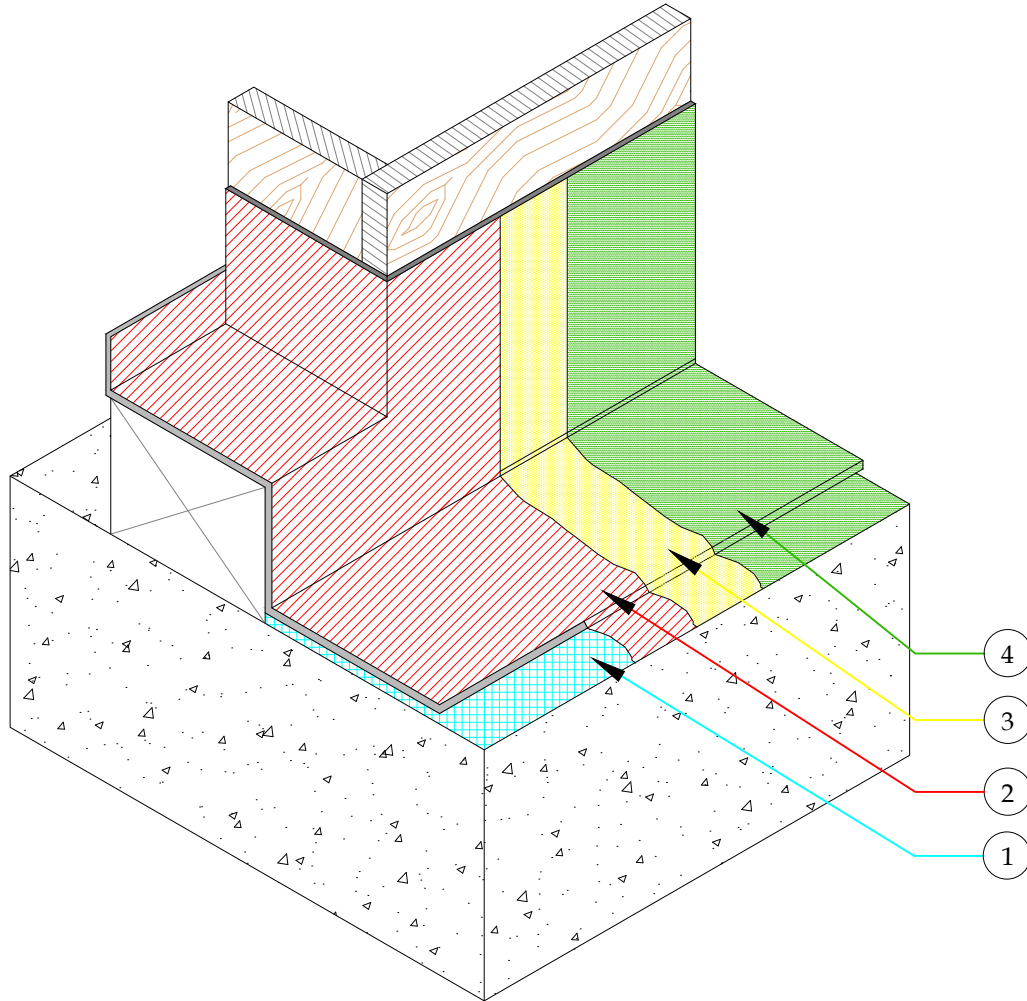


1. PRIMER AS SPECIFIED BY TB-111
2. 3/4 OZ FIBERGLASS & PD RESIN (2 COATS) RESIN OR PD FLASH COAT AND FLASH COAT SEAM OR SELF-ADHERING MESH TAPE. TAPE CAN BE USED IN LIEU OF FIBERGLASS & PD RESIN ON THE VERTICAL LEG OF FLASHING
3. GU80 TOP COAT
4. GS88 PIGMENTED SEALER



DETAIL-DOOR PAN FLASHING-ONE PIECE OVER CONCRETE
 SUBSTRATE- ISOMETRIC-INCLEMENT WEATHER
 SCALE: N.T.S



PLI DEK
 WATERPROOFING SOLUTIONS
 41610 Date St., Suite 104 * Murrieta, CA. 92562
 Phone: 800.364.0287 * Fax: 951.834.9555
 WWW.PLIDEK.COM

These waterproofing procedures are not to be used for permit and should be reviewed by the project architect. The waterproofing procedures are not complete plans or specifications and a professional design professional should be contacted prior to performing major waterproofing and repairs.

System:	Con-Dek System by Pli-Dek Systems, Inc. ICC-ES ESR-2097	
Detail:	DOOR PAN FLASHING ONE PIECE OVER CONCRETE SUBSTRATE-ISOMETRIC INCLEMENT WEATHER	
Job:		Drawing Number:
Date:	04/01/2019	CD-3-IW
Dwn:	E.L.	