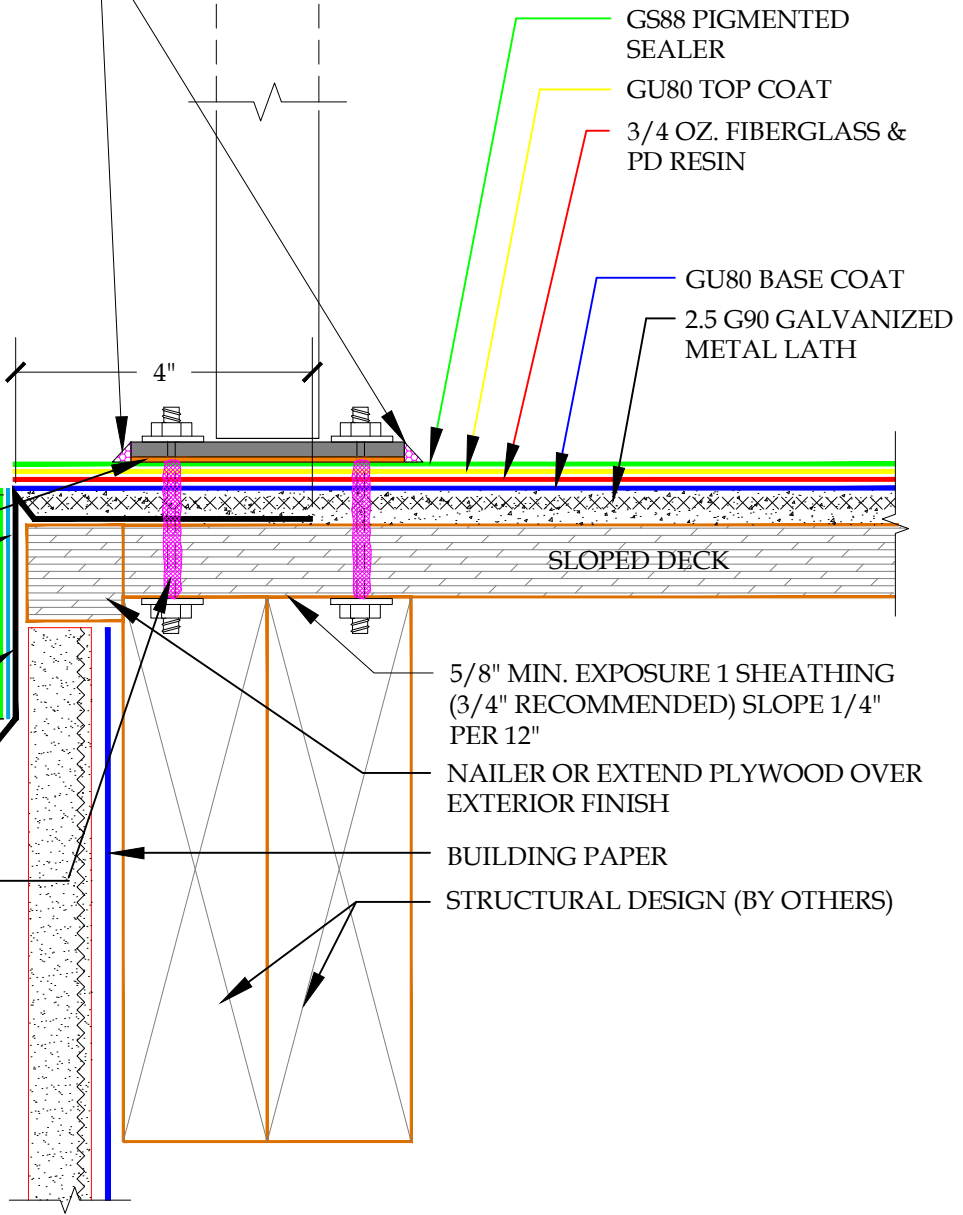


PLAN VIEW

APPLY ASTM C-920 POLYURETHANE SEALANT TO THE INSIDE AND OUTSIDE OF THE FASTENER/PENETRATIONS AS WELL AS UNDER THE BASE PLATE AND AROUND THE PERIMETER OF THE BASE PLATE. SEALANT WILL NEED TO BE MAINTAINED YEARLY. NOTE: LAG BOLT INSTALLATION, DRILL PILOT HOLES FOR LAG BOLTS & INJECT HOLE WITH ASTM C-920 POLYURETHANE SEALANT PRIOR TO INSTALLATION OF LAG BOLT. (BOLT INSTALLATION AND SEALANT ARE THE RESPONSIBILITY OF RAIL INSTALLER)

NEOPRENE OR EPDM GASKET (OPTIONAL)
 VERTICAL FLASHING COATED WITH PD FLASH COAT AND/OR GS88 PIGMENTED SEALER
 MIN. 26 GAUGE GALVANIZED SHEET METAL FLASHING 1/2" DRIP (3/16" RISE)
 ATTACHMENT OF RAIL TO BE SEALED WITH ASTM-C-920 POLYURETHANE SEALANT



GS88 PIGMENTED SEALER
 GU80 TOP COAT
 3/4 OZ. FIBERGLASS & PD RESIN
 GU80 BASE COAT
 2.5 G90 GALVANIZED METAL LATH

5/8" MIN. EXPOSURE 1 SHEATHING (3/4" RECOMMENDED) SLOPE 1/4" PER 12"
 NAILER OR EXTEND PLYWOOD OVER EXTERIOR FINISH
 BUILDING PAPER
 STRUCTURAL DESIGN (BY OTHERS)

DETAIL-METAL DECK RAIL- SURFACE MOUNTED - INCLEMENT WEATHER

SCALE: N.T.S.

WWW.ICPGROUP.COM

PLI DEK
 WATERPROOFING SOLUTIONS
 41610 Date St., Suite 104 * Murrieta, CA. 92562
 Phone: 800.364.0287 * Fax: 951.834.9555
 WWW.PLIIDEK.COM

These waterproofing procedures are not to be used for permit and should be reviewed by the project architect. The waterproofing procedures are not complete plans or specifications and a professional design professional should be contacted prior to performing major waterproofing and repairs.

System:		Pli-Dek System ICC-ES ESR-2097	
Detail:		METAL DECK RAIL - SURFACE MOUNTED INCLEMENT WEATHER	
Job:		Drawing Number:	
Date:	04/01/2019	PD-17A-IW	
Dwn:	E.L.		