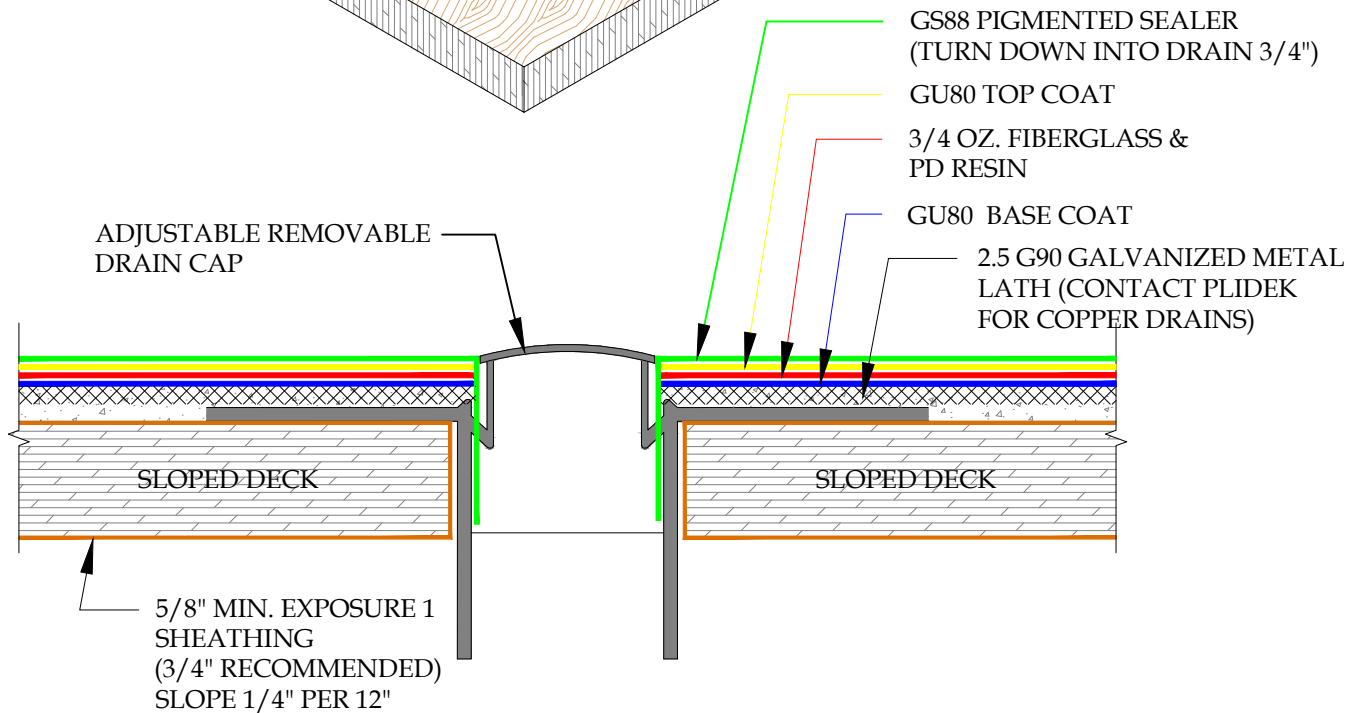
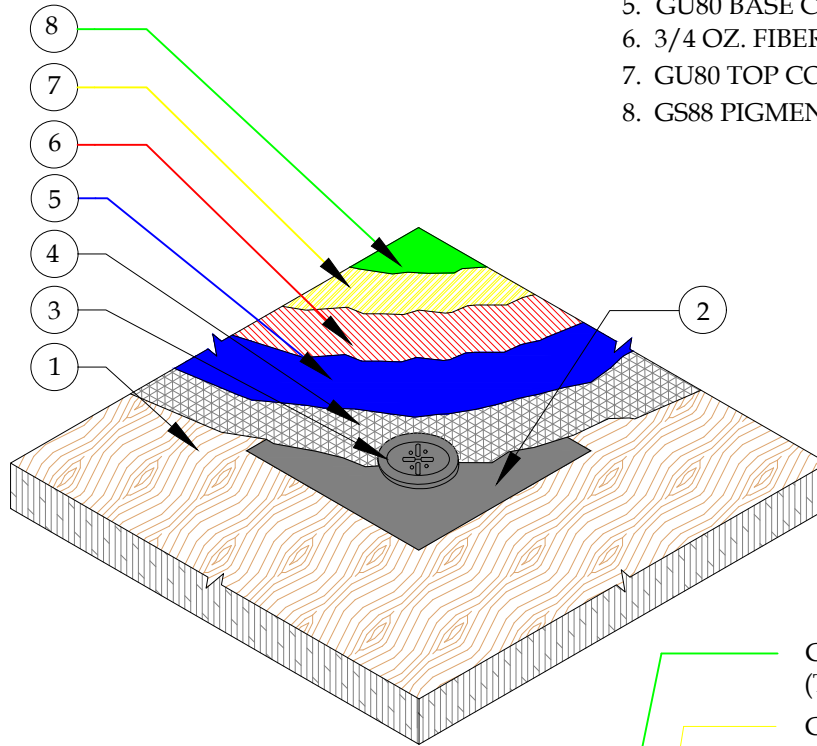


NOTE:  
 DRAIN DECK PLATES MEASURES:  
 230MM (9") SQUARE FOR 50MM (2")  
 250MM (10") SQUARE FOR 76MM  
 (3") DRAIN.

1. PLYWOOD DECK (SLOPED)
2. GALVANIZED OR STAINLESS STEEL DRAIN DECK PLATE
3. DRAIN-STRAINER
4. 2.5 G90 GALVANIZED METAL LATH
5. GU80 BASE COAT
6. 3/4 OZ. FIBERGLASS & PD RESIN
7. GU80 TOP COAT
8. GS88 PIGMENTED SEALER



**DETAIL-GALVANIZED DECK DRAIN-INCLEMENT WEATHER**  
 SCALE: N.T.S.



**PLI DEK**  
 WATERPROOFING SOLUTIONS  
 41610 Date St., Suite 104 \* Murrieta, CA. 92562  
 Phone: 800.364.0287 \* Fax: 951.834.9555  
 WWW.PLIDEK.COM

These waterproofing procedures are not to be used for permit and should be reviewed by the project architect. The waterproofing procedures are not complete plans or specifications and a professional design professional should be contacted prior to performing major waterproofing and repairs.

System:		Pli-Dek System ICC-ES ESR-2097	
Detail:		GALVANIZED DECK DRAIN INCLEMENT WEATHER	
Job:		Drawing Number:	
Date:	04/01/2019	PD-24-IW	
Dwn:	E.L.		