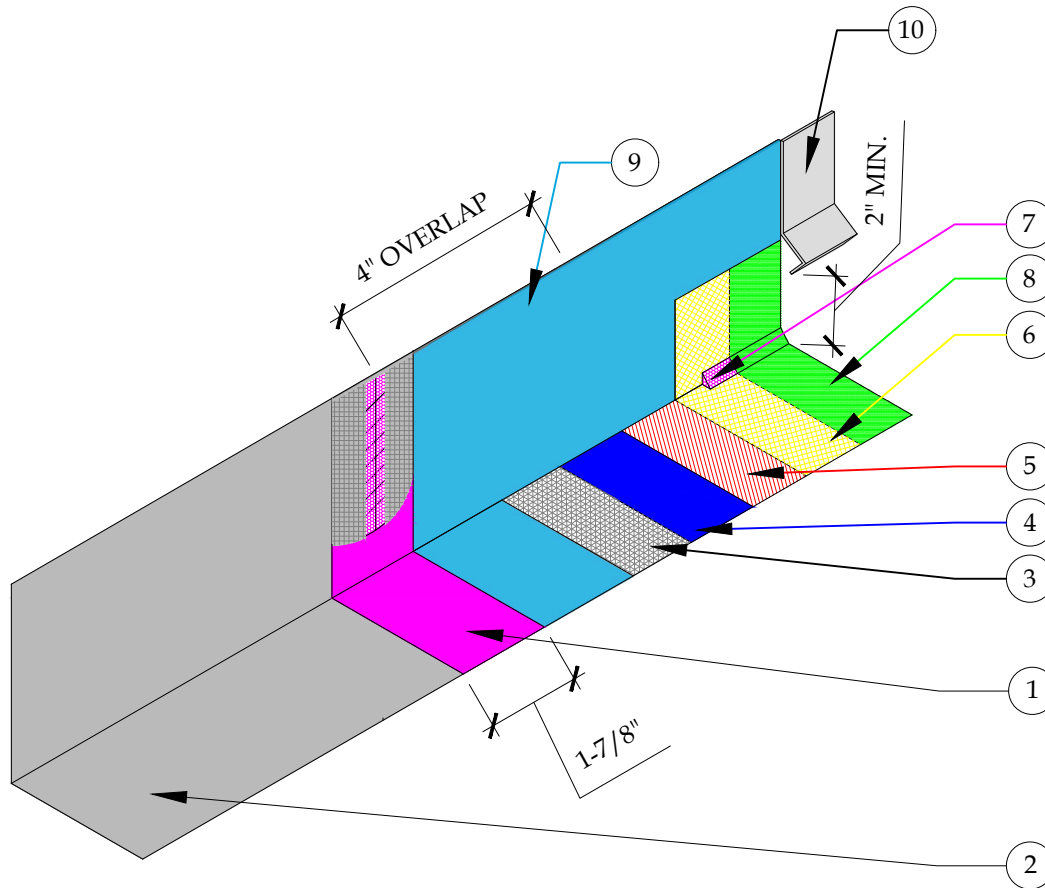


NOTES:

- ALL FLASHING TO BE GALVANIZED AND MINIMUM 26 GAUGE.
- ALL METAL FLASHING SURFACES REQUIRE CLEAN WIPE WITH SOLVENT PRIOR TO INSTALLATION, (MEK, ACETONE, XYLOL, XYLENE, ISOPROPYL ALCOHOL OR VINEGAR).
- ALL FLASHING OVERLAPS SHALL BE A MIN. OF 4" INSTALLED NOT TO "BUCK" WATER.
- THE FACE SEAM OF THE SHEET METAL OVERLAP, HORIZONTAL AND VERTICAL OVERLAPS, SHALL HAVE AN EMBEDMENT OF 3/4" SEALANT BEAD. (SURFACE SEALANT NOT ACCEPTABLE).
- (OPTIONAL) APPLY CONTINUOUS SEALANT 1" IN BOTH DIRECTIONS FROM THE OVERLAP SEAM AND EMBED 1-7/8" PAPERLESS DRYWALL JOINT TAPE WITH A MARGIN TROWEL TO THE ENTIRE SEAM AND ENSURE THE PAPERLESS DRYWALL JOINT TAPE IS COMPLETELY IN THE SEALANT.
- SEALANT IS REQUIRED TO BE A POLYURETHANE SEALANT PER ASTM C 920, IE: SIKA-1A, TREMCO 116 OR 911, SONNEBORN-NP1, DAP PREMIUM POLYURETHANE, QUICKRETE 8660, OR APPROVED EQUAL.
- VERTICAL FLASHING TO BE COATED WITH PD FLASH COAT AND/OR GS88 PIGMENTED SEALER.
- ALL EXPOSED METAL TO BE COATED WITH PLI-DEK FINISH COAT.

DETAIL LEGEND

1. FLASH COAT SEAM TAPE OR SELF-ADHERING FIBERGLASS MESH TAPE EMBEDDED IN SEALANT AND COATED WITH FLASH COAT.
2. 26 GAUGE GALVANIZED FLASHING, REFER TO TB-110 FOR ADDITIONAL INFORMATION.
3. 2.5 G90 METAL LATH
4. GU80 BASE COAT
5. 3/4 OZ. FIBERGLASS & PD RESIN
6. GU80 TOP COAT
7. CANT BEAD OF POLYURETHANE SEALANT THAT MEETS ASTM-C920
8. GS88 PIGMENTED SEALER
9. VERTICAL FLASHING SHALL BE COATED WITH 3/4 OZ. FIBERGLASS AND PD RESIN OR PD FLASHCOAT AND FLASHCOAT SEAM TAPE OR SELF-ADHERING MESH TAPE
10. WEEP SCREED



DETAIL-FLASHCOAT FLASHING OVERLAP-INCLEMENT WEATHER
SCALE: N.T.S



These waterproofing procedures are not to be used for permit and should be reviewed by the project architect. The waterproofing procedures are not complete plans or specifications and a professional design professional should be contacted prior to performing major waterproofing and repairs.

System:	Pli-Dek System ICC-ES ESR-2097	
Detail:	FLASHING OVERLAP INCLEMENT WEATHER	
Job:		Drawing Number:
Date:	04/01/2019	PD-28A-IW
Dwn:	E.L.	