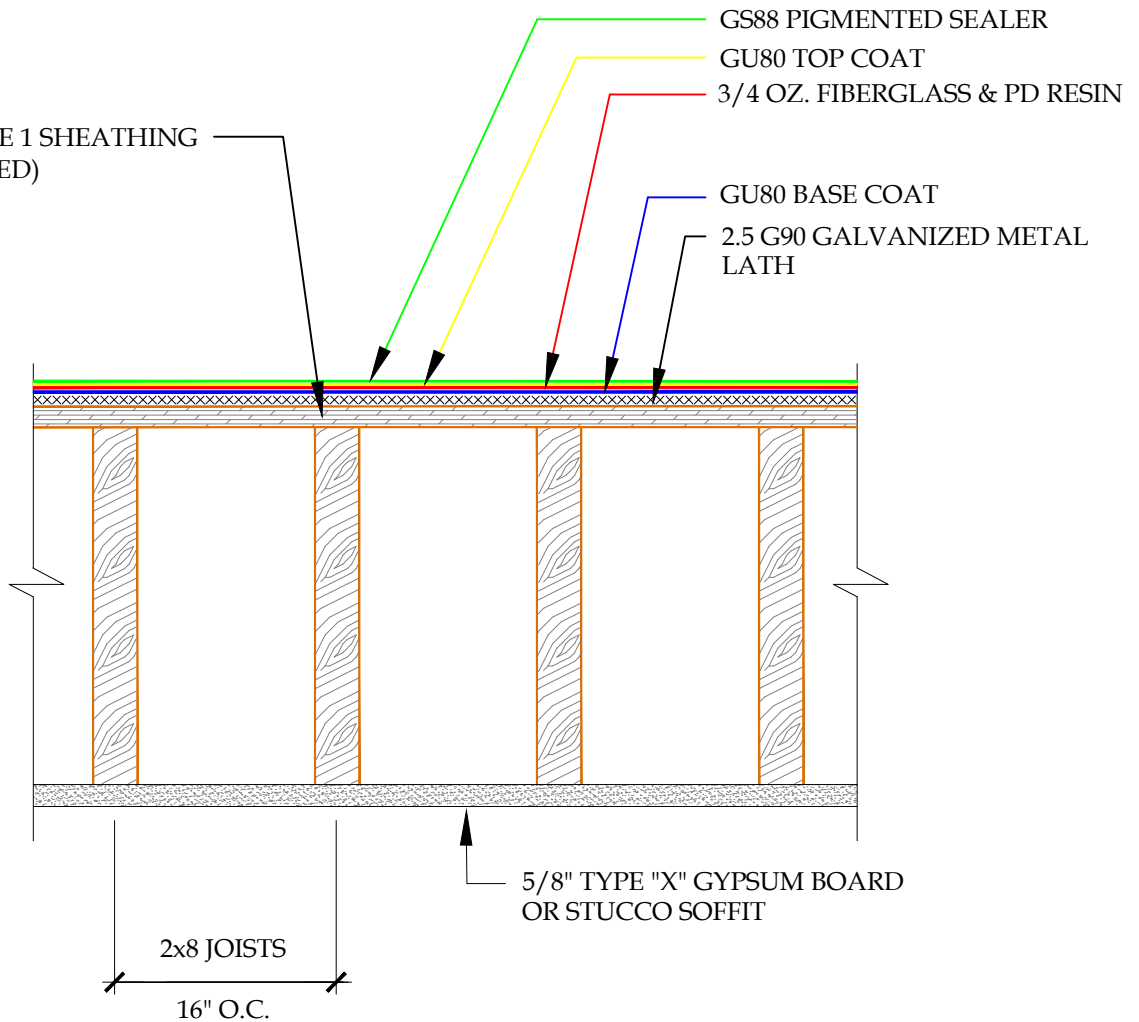


5/8" MIN. EXPOSURE 1 SHEATHING
(3/4" RECOMMENDED)
SLOPE 1/4" PER 12"



NOTE: *PLEASE CONTACT Pli-DEK FOR ALTERNATE ONE-HOUR FIRE RATED ASSEMBLIES*

DETAIL-1-HR FIRE RATED ASSEMBLY-INCLEMENT WEATHER
SCALE: N.T.S.



PLI-DEK
WATERPROOFING SOLUTIONS
41610 Date St., Suite 104 * Murrieta, CA. 92562
Phone: 800.364.0287 * Fax: 951.834.9555
WWW.PLI-DEK.COM

These waterproofing procedures are not to be used for permit and should be reviewed by the project architect. The waterproofing procedures are not complete plans or specifications and a professional design professional should be contacted prior to performing major waterproofing and repairs.

System:		Pli-Dek System ICC-ES ESR-2097	
Detail:		1-HR FIRE RATED ASSEMBLY INCLEMENT WEATHER	
Job:		Drawing Number:	
Date:	04/01/2019	PD-42-IW	
Dwn:	E.L.		