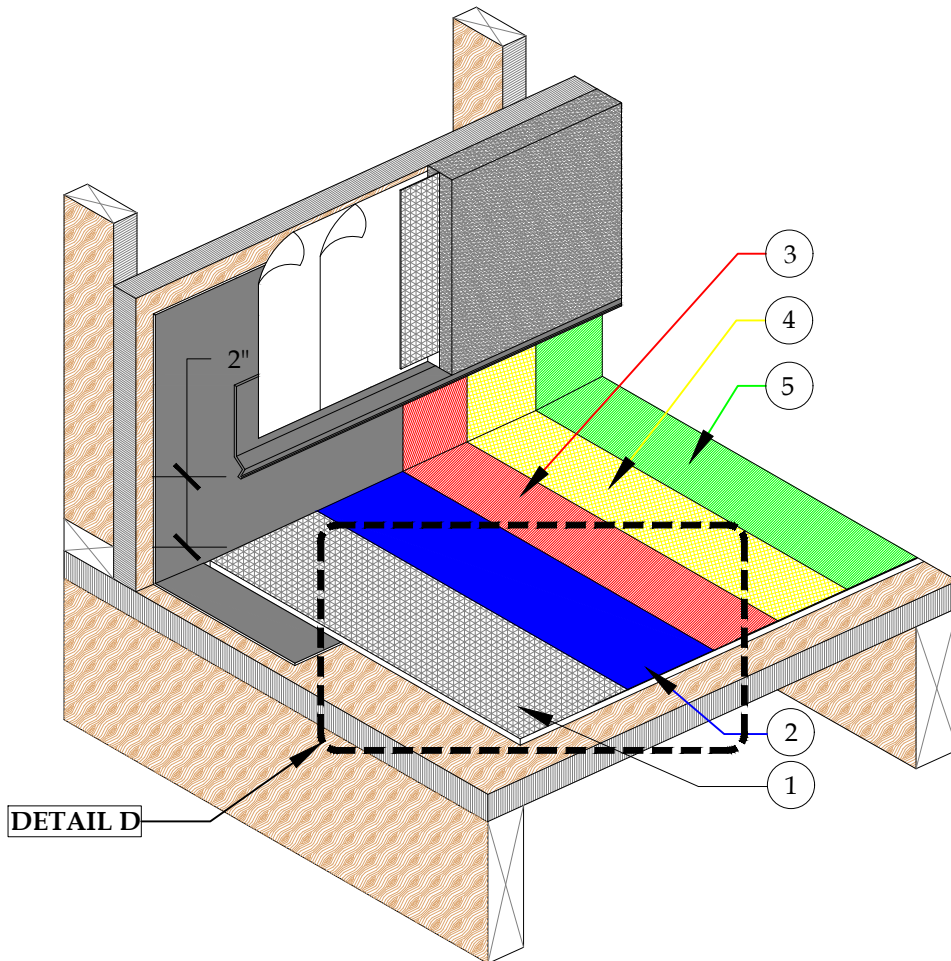


5/8" MIN. EXPOSURE 1 SHEATHING  
(3/4" RECOMMENDED) SLOPE 1/4" PER 12"

1. 2.5 G90 GALVANIZED METAL LATH
2. GU80 BASE COAT
3. VERTICAL FLASHING SHALL BE COATED WITH 3/4 OZ. FIBERGLASS AND PD RESIN OR PD FLASHCOAT AND FLASHCOAT SEAM TAPE OR SELF-ADHERING MESH TAPE
4. GU80 TOP COAT
5. GS88 PIGMENTED SEALER

**DETAIL D**  
**SCALE: N.T.S.**



**DETAIL-DECK TO WALL FLASHING DETAIL-INCLEMENT WEATHER**  
**SCALE: N.T.S.**



**PLI DEK**  
WATERPROOFING SOLUTIONS  
41610 Date St., Suite 104 \* Murrieta, CA. 92562  
Phone: 800.364.0287 \* Fax: 951.834.9555  
WWW.PLIDEK.COM

These waterproofing procedures are not to be used for permit and should be reviewed by the project architect. The waterproofing procedures are not complete plans or specifications and a professional design professional should be contacted prior to performing major waterproofing and repairs.

System:		Pli-Dek System ICC-ES ESR-2097	
Detail:		DECK TO WALL FLASHING DETAIL ON PLYWOOD DECK INCLEMENT WEATHER	
Job:		Drawing Number:	
Date:	04/01/2019	PD-9-IW	
Dwn:	E.L.		