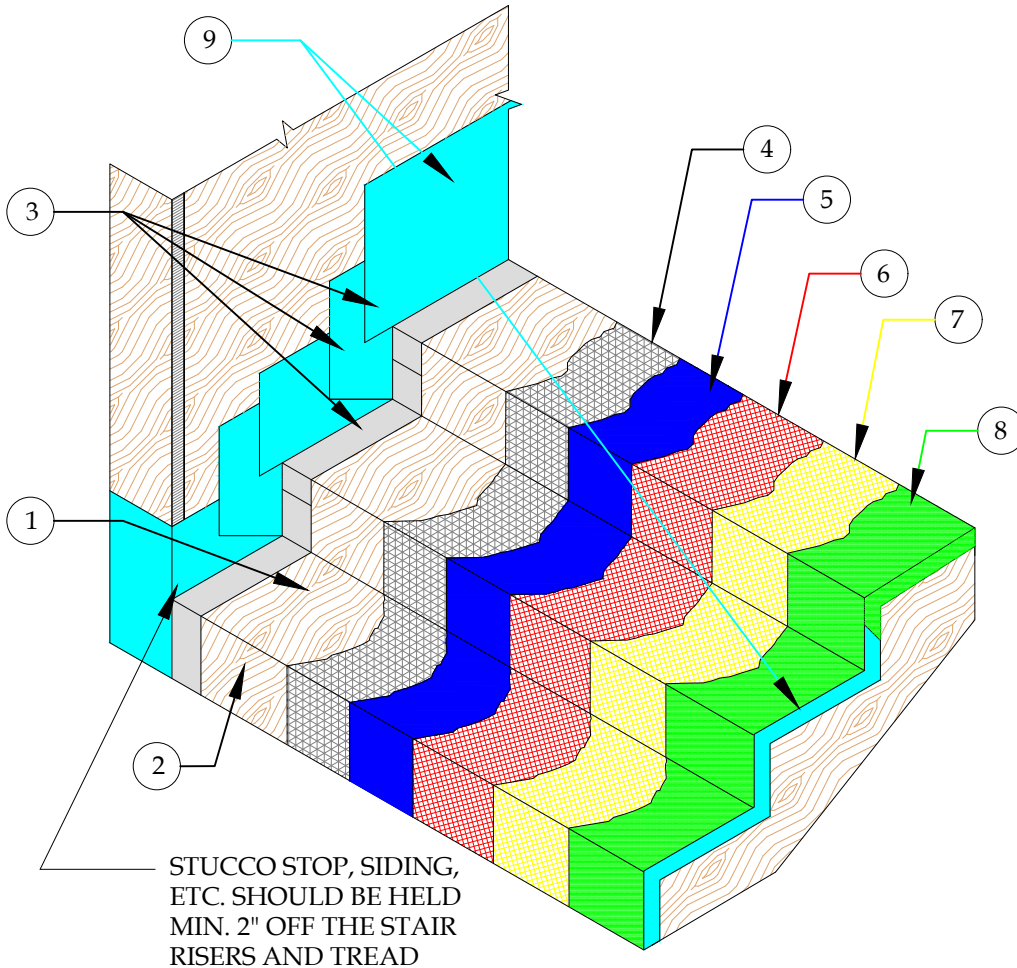
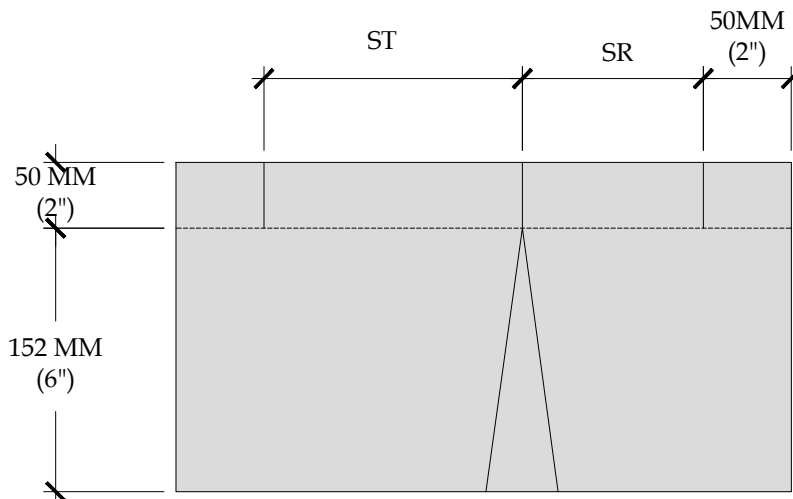


1. PLYWOOD STAIR TREAD
2. PLYWOOD STAIR RISER
3. STANDARD 2" x 6", 26 GAUGE GALVANIZED FLASHING WITH SEALANT AT OVERLAPS
4. 2.5 G90 METAL LATH
5. GU80 BASE COAT
6. 3/4 OZ. FIBERGLASS & PD RESIN
7. GU80 TOP COAT
8. GS88 PIGMENTED SEALER
9. VERTICAL FLASHING SHALL BE COATED WITH FIBERGLASS AND PD RESIN OR PD FLASHCOAT AND FLASHCOAT SEAM TAPE OR SELF-ADHERING MESH TAPE



NOTE:
STAIR NOSING OPTIONAL



NOTE:
ST-STAIR TREAD DIMENSION
SR-STAIR RISER DIMENSION

DETAIL-STAIRWAY WALL FLASHING-INCLEMENT WEATHER

SCALE: N.T.S.



PLI DEK
WATERPROOFING SOLUTIONS
41610 Date St., Suite 104 * Murrieta, CA. 92562
Phone: 800.364.0287 * Fax: 951.834.9555
WWW.PLIDEK.COM

These waterproofing procedures are not to be used for permit and should be reviewed by the project architect. The waterproofing procedures are not complete plans or specifications and a professional design professional should be contacted prior to performing major waterproofing and repairs.

| | | |
|---------|---|-----------------|
| System: | Pli-Dek System ICC-ES ESR-2097 | |
| Detail: | STAIRWAY WALL FLASHING INCLEMENT WEATHER | |
| Job: | | Drawing Number: |
| Date: | 04/01/2019 | PD-SA-2-IW |
| Dwn: | E.L. | |